

# *Local History & Genealogy Guide*



**Kenton County Public Library  
Local History & Genealogy Department  
502 Scott Blvd., Covington, KY 41011  
(859) 962-4070 [www.kentonlibrary.org/genealogy](http://www.kentonlibrary.org/genealogy)**

**Hours:  
By Appointment  
Mon - Wed 9-5, Thur 9-9, Fri 9-5, Sat 9-5**

**XVI: February 2021**

# ***Kenton County Public Library Local History & Genealogy Collection***

The Kenton County Public Library houses one of the most significant collections of local history and genealogy materials in Kentucky. The library's book and microfilm collections include materials on every county in the Commonwealth with a special emphasis on Northern Kentucky.

Among the major sources available in the local history and genealogy collections include Kentucky census records and indexes from 1810, newspapers, tax records, Northern Kentucky church records, and Kentucky birth, marriage and death records. The local history vertical files include information on Northern Kentucky people, institutions, schools, associations and other related topics. The library's own [\*Northern Kentucky Newspaper Index\*](#) is a significant resource for genealogy and local history research, providing a guide for more than one hundred years of Northern Kentucky publications including the *Kentucky Post*, *Kentucky Times-Star*, and the *Enquirer*. The library also maintains its [\*Faces and Places\*](#) photographic database with over 100,000 images of local citizens, architecture, and events.

***This user guide will provide you with an outline of the major resources available at the Kenton County Public Library. Many other sources are also available for genealogy and local history use. Please consult the library's online catalog or inquire at the Local History desk at (859) 962-4070 for suggestions on additional materials.***

## **Online Resources and Microfilm Collection Index**

**Online Resources 2-3**  
**Associations 4**  
**Atlases and Maps 4**  
**Biography/Personal Papers 5**  
**Cemetery Records 5-6**  
**Census Records 6**  
**Church Records 7-8**  
**City Directories 9**  
**City Records 9**  
**County Records 10**  
**Family Files 10**  
**Federal Records 10**  
**Funeral Home Records 10**  
**Guardian Bonds 10**  
**Local History Files 11**  
**Military Records 11**  
**Mortality Records 11**  
**Naturalization Records 12**  
**Newspapers 12**

**Passenger Lists 12**  
**Photograph Collection 13**  
**Property Records 13**  
**Special Collections 14**  
**Tax Records 14**  
**Vital Statistics 15-17**  
**Wills 16-17**  
**KY Collection Call Numbers 18**

## **Online Resources**

See our web page at [www.kentonlibrary.org/genealogy](http://www.kentonlibrary.org/genealogy).

*The following databases can be accessed at all three KCPL branches.*

### **Ancestry Library Edition**

- United States Federal Census records from 1790 to 1940.
- Military records and passenger lists.
- Birth, marriage, and death records.

### **FindMyPast**

- Covers the U.S., Canada, Great Britain and Ireland.
- Census, birth, marriage, and death records.
- Church records from the Archdiocese of Cincinnati and several other U.S. cities.

*The following databases can be accessed at all three KCPL branches. Home access requires a KCPL library card.*

### **NewspaperArchive**

- National and international papers.
- Digital images.

### **Cincinnati/Kentucky Historical Enquirer**

- Includes digital images and covers 1841-2009.

### **Fold3**

- Digitized collections from the National Archives and others.
- Strong on military information, especially Civil War.
- 1860 and 1930 federal censuses.
- City directories, passport applications, newspapers, and vital records.

### **HeritageQuest Online**

- Freedman's Bank records.
- Selected Revolutionary War pension and bounty land applications.
- Digital book collection. Over 25,000 local history and genealogy publications.
- U.S. Serial Set. Information from the Memorials, Petitions and Private Relief Actions of the U.S. Congress.

### **Louisville Courier Journal Historical**

- Searchable full text articles and digital images from 1830-1922.

### **Chicago Defender**

- Predominantly African American news, local, state, and national.
- Covers 1909-1975.

### **NewsBank**

- Full-text access to the Kentucky and Cincinnati Post (April 1990 to December 2007) as well as other newspapers in the region.

### **Sanborn Insurance Maps**

- Digital images of 19<sup>th</sup> and 20<sup>th</sup> century Kentucky city maps.

### **MyHeritage (formerly WorldVitalRecords)**

- U.S. Federal Census records; military records; vital records; enhanced Social Security Death Index records; full text of modern U.S. newspaper obituaries.
- 28 million family trees.

*The following indexes are free and searchable from [www.kentonlibrary.org/genealogy](http://www.kentonlibrary.org/genealogy)*

### **Northern Kentucky Newspaper Index**

- Contains over one million entries.
- Includes digital images of many older newspapers.
- Index currently covers 1835 to 1936, 1940-42, and 1982 to the present.

### **geNKY - Northern Kentucky Genealogy Database**

- Some of the collections to be found in this database are:

Northern Kentucky High School Yearbook Index; Northern Kentucky Mexican-American War Veterans 1846-1848; St. Elizabeth Hospital Patient Records 1861-; Louisville & Nashville Railroad Brakeman Records 1906-1916; Northern Kentucky Real Estate records; Ludlow Mayor's Court Records Index 1881-1891; Civil War Union Veterans Burial List for Kentucky; St. James Parish, Ludlow, Liber Status Animarum (Parish Census) 1894 and 1913; St. Mary Cemetery Records, Ft. Mitchell, 1881-1996; World War I Service Records (Kenton Co.); Linden Grove Cemetery Records, Covington 1868-1998; Mary E. Smith African American Cemetery Tombstone Records, Elsmere, 1950-1967.

### **Faces and Places: Northern Kentucky Photographic Archives**

- Contains over 118,000 digitized photographs.
- Fully searchable by subject and keyword.
- Additional images added on a regular basis.



## **Microfilm Collection**

### **Associations**

Catholic Order of Foresters, St. Stephen Court 1380, Newport. Minute Books 1911-1946. Microfilm 267.242 C363f 1911-1946  
Confederate Veterans Association of Kentucky. Microfilm 061.69 C748v  
Kenton Co. Bar Assoc. Articles of Incorporation & Minutes 1901-12. Microfilm 976.935 K367m  
Kenton County Humane Society Minute Book 1895-1918. Microfilm 976.935 K367m.  
Knights of Pythias, Lodge #49. Microfilm 366.2 K71pd  
Latonia Agricultural Association, Official Proceedings 1882-1909. Microfilm 976.935 K367m  
Lewisburg Neighborhood Association 1993-2000. Microfilm 976.935 L677n  
Northern Kentucky Council for Retarded Children. Microfilm 061.69 N874c  
Northern Kentucky YMCA. Microfilm 267.3 Y78  
Odd Fellows, Goodwill Lodge #62. Microfilm 366.3 I38ge  
Odd Fellows, Adams Lodge #188. Microfilm 366.3 I38a  
Odd Fellows, Lodge #219. Microfilm 366.3 I38d  
Odd Fellows, Lodge #308. Microfilm 366.3 I38b

### **Atlases and Maps**

Many of these titles are also available in book form. Selected (\*) titles are in digital format at <http://www.kentonlibrary.org/genealogy/maps>.

Atlas of Boone, Kenton, and Campbell Counties 1883. Microfilm 912.769 M678a \*  
Bourbon, Clark, Fayette, Jessamine & Wood Cos, KY Atlas 1877. Microfilm 912.769 M678a  
Bracken and Pendleton Counties, Kentucky Atlas 1884. Microfilm 912.769 M678a \*  
Carroll and Gallatin Counties, Kentucky Atlas 1883. Microfilm 912.769 M678a \*  
Cincinnati and Kentucky Cities 1926. Microfilm 912.769 M678a  
Covington City Atlas 1877. Microfilm 912.769 M678a \*  
Covington Map 1938. Microfilm 912.769 M678a  
Covington and Environs Maps 1936. Microfilm 912.769 M678a  
Covington and Newport Map 1951. Microfilm 912.769 M678a  
Daviess County, Kentucky Atlas 1876. Microfilm 912.769 M678a  
Franklin County, Kentucky Atlas 1882. Microfilm 912.769 M678a  
Henry and Shelby Counties, Kentucky 1882. Microfilm 912.769 M678a  
KY State Gazetteer, 1876-1877; 1879-1880, 1883-1884, 1887-1888, 1896. Microfilm 338.4 K37s  
Logan County, Kentucky Atlas 1877. Microfilm 912.769 M678a  
Louisville, Kentucky Atlas 1876. Microfilm 912.769 M678a  
Louisville, Kentucky Atlas 1884. Microfilm 912.769 M678a  
Nelson and Spencer Counties, Kentucky 1882. Microfilm 912.769 M678a  
Owen County, Kentucky Atlas 1883. Microfilm 912.769 M678a  
Sanborn Fire Insurance Maps, Covington and neighboring cities 1886, 1894, 1909. Microfilm 912.769 M678m  
Sanborn Fire Insurance Maps, State of Kentucky, 1946-1992, Anchorage-Eminence and Louisville -Nicholasville. Microfilm 368.11 S198f and at [www.kentonlibrary.org/genealogy](http://www.kentonlibrary.org/genealogy) .  
Upper Ohio River and Valley from Pittsburgh to Cincinnati 1877. Microfilm 912.769 M678a



## Biography/Personal Papers

Ancestry and Descendancy of Embury King Sr. and Rosa Duncan. Microfilm 929.2 K54s  
 Draper manuscript (Kentucky Portion). Microfilm 976.9 D767mc  
 Dressman, J.H., Scrapbook of 1891-1918. Microfilm 330.9769 J111s  
 Duveneck, Frank: Family photo album, biography & newspaper accounts. Microfilm B D985f  
 Families of Bond & McWhorter with allied Families. Microfilm 929.2 B7113b  
 Genealogy of the Houser, Rhorer, Dillman and Hoover Families. Microfilm 929.2 H8422h  
 Goebel, William F.: Miscellaneous Newspaper Accounts. Microfilm B G593 wi  
 Holmes, Daniel Henry Sr.: Diary 1877-1898. Microfilm B H7495  
 Huber, Edward Justin (NKY Musician) Personal Papers. Microfilm B H877  
 Mackoy Family Papers (in [GeNKY](#))  
 Neal Family Scrapbook. Microfilm 929.2 N344s  
 Autobiography of Dr. J.J. Polk. Microfilm 929.3 G326ah  
 Sommerkamp, Frank, Servicemen letters, 1918-19; Correspondence 1938-47. Mfilm B S 6968  
 Sperti, Georgii Speri, Scrapbook of 1938-1979. Microfilm 330.9769 S751s  
 Stephens/Ryan Families. Microfilm 929.2 S8461s  
 W.T. Sherman Family Papers. Microfilm B S5536wt  
 Yont, Yount, Cordell, Franklin, Howe & Duncan Families. Microfilm 929.2 M678s

## Cemetery Records

Also check the catalog for cemetery records in book form.

| Cemetery                                         | City/County                         | Location                                     |
|--------------------------------------------------|-------------------------------------|----------------------------------------------|
| Alexandria Cemetery                              | Alexandria/Campbell                 | Microfilm 929.5 C192a                        |
| Allen County Cemeteries                          | Allen                               | Microfilm COLL Reel 1                        |
| Battlegrove Cemetery                             | Harrison County                     | Microfilm 929.5 H322b                        |
| Buena Vista                                      | Covington/Kenton                    | KR 976.935 S156j                             |
| Carlisle County Cemetery<br>Inscriptions         | Carlisle County                     | Microfilm 929.3 G326ah                       |
| Cemeteries of Campbell<br>and Pendleton Counties | Campbell County<br>Pendleton County | KR 976.93 C394cp                             |
| Evergreen Cemetery                               | Southgate/Campbell                  | Microfilm 929.5 C192e                        |
| Gallatin Co. Family<br>Cemeteries                | Gallatin County                     | Microfilm 929.5 G164cf                       |
| Grandview Cemetery                               | Campbell County                     | Microfilm 929.5 C192c                        |
| Highland Cemetery                                | Ft. Mitchell/Kenton                 | Microfilm 929.5 K37h                         |
| Holy Guardian Angels                             | Sandfordtown/Kenton                 | Microfilm 282 S1428j                         |
| Independence Cemetery                            | Independence/Kenton                 | Microfilm 929.5 I38i<br>KR 976.935 I38cr     |
| Kenton County Cemeteries                         | Kenton County                       | KR 976.935 K37s                              |
| Knox Co Cemetery Records                         | Knox County                         | Microfilm 976.9 M678h2                       |
| Linden Grove Cemetery                            | Covington/Kenton                    | Microfilm 929.5 K37lm and<br>976.935 L744gi2 |
| Mary E. Smith African<br>American Cemetery       | Elsmere/Kenton                      | Microfilm 929.5 C192c                        |
| Mother of God Cemetery                           | Covington/Kenton                    | Microfilm 929.5 K37m and m2                  |
| Owsley Co Cemetery                               | Owsley County                       | Microfilm 976.9176 O973c                     |
| Pendleton Co. Cemeteries                         | Pendleton County                    | Microfilm 929.5 P398c, v.1                   |
| Plum Creek Church Cem.                           | Plum Creek/Campbell                 | Microfilm 929.5 C192c                        |
| St. James Cemetery                               | Brooksville/Bracken                 | Microfilm 282 S1428j                         |

|                          |                      |                          |
|--------------------------|----------------------|--------------------------|
| St. John Cemetery        | Ft. Mitchell/Kenton  | KR 976.935 S156j         |
| St. Joseph Cemetery      | Cincinnati/Hamilton  | Microfilm 929.5 O37hsj   |
| St. Joseph Cemetery      | Cold Spring/Campbell | Microfilm 282 S143jo     |
| St. Joseph Cemetery      | Warsaw/Gallatin      | Microfilm 282 S143je     |
| St. Mary Cemetery        | Fort Mitchell/Kenton | Digital Images 1891-1996 |
| St. Patrick Cemetery     | Maysville/Mason      | Microfilm 282 C363c      |
| St. Patrick Cemetery     | Washington/Mason     | Microfilm 282 C363c      |
| St. Stephen Cemetery     | Ft. Thomas/Campbell  | KR 976.934 S153a         |
| Warren County Cemeteries | Warren County        | Microfilm 929.3 B967g    |
| Wesley Chapel Cemetery   | Campbell County      | Microfilm 929.5 C192c    |

## Census Records (microfilm)

United States Census for the Commonwealth of Kentucky: 1810-1880 and 1900-1930

United States Census for the Commonwealth of Kentucky: 1890 Civil War veterans and widows

Agricultural and Manufacturing Census Records, 1850, 1860, 1870 Microfilm 929.31 U58cam

Kenton County School Census, 1912-1977. Microfilm 320.83K37be

## geNKY Church Records Index

*The geNKY database contains a searchable index for the following church records.*

- Cathedral Parish, Covington Baptisms 1850-1924 (Also known as Saint Mary)
- Holy Guardian Angels Church, Sandfordtown Baptisms 1867-1926
- Mother of God Church, Covington Baptisms 1842-1915
- Saint Aloysius, Covington Baptisms 1865-1927
- Saint Ann Church, West Covington Baptisms 1889-1904
- Saint Augustine Church, Covington Baptisms 1870-1895
- Saint Benedict Church, Covington Baptisms 1885-1910
- Saint Boniface Church, Ludlow Baptisms 1872-1924, Deaths 1872-1925
- Saint Charles Borromeo Church, Flemingsburg Baptisms 1900-1925
- Saint Henry Church, Elsmere/Erlanger Baptisms 1904-1924
- Saint James Church, Ludlow Baptisms 1889-1924, Deaths 1889-1925
- Saint John Church, Covington Baptisms 1919-1934
- Saint Joseph Church, Covington Baptisms 1856-1937
- Saint Paul, Florence Baptisms 1891-1916
- Saint Patrick Church, Covington Baptisms, Marriages, Deaths 1872-1967
- Saint Philip, Melbourne Baptisms 1910-1926
- Saint Stephen Episcopal, Covington Baptisms, Deaths 1907-1947
- Saint Thomas, Fort Thomas Baptisms 1895-1925

## Church Records – Catholic

| <i><b>Parish</b></i>        | <i><b>City/County</b></i> | <i><b>Dates</b></i> | <i><b>Film Location</b></i> |
|-----------------------------|---------------------------|---------------------|-----------------------------|
| Cathedral - St. Mary (I)    | Covington/Kenton          | 1850-1924           | F282 S146m                  |
| Corpus Christi (G)          | Newport/Campbell          | 1845-1924           | F282 C822c                  |
| Holy Cross (G)              | Covington/Kenton          | 1891-1924           | F282 H761c                  |
| Holy Guardian Angels (G)    | Sandfordtown/Kenton       | 1867-1994           | F282 S1428j                 |
| Immaculate Conception       | Stepstone/Campbell        | 1858-1912           | F282 C363ca                 |
| Immaculate Conception (I)   | Newport/Campbell          | 1856-1961           | F282 C822c                  |
| Mother of God (G)           | Covington/Kenton          | 1842-1924           | F282 S1427ja and jb         |
| St. Aloysius (G)            | Covington/Kenton          | 1865-1986           | F282 S133a                  |
| St. Ann (I)                 | Covington/Kenton          | 1862-1930           | F282 S134a                  |
| St. Anthony (I)             | Bellevue/Campbell         | 1889-1924           | F282 S138 fb                |
| St. Augustine               | Augusta/Bracken           | 1860-1925           | F282 C363ca                 |
| St. Augustine (G)           | Covington/Kenton          | 1870-1924           | F282 S146m                  |
| St. Benedict (G)            | Covington/Kenton          | 1885-1987           | F282 S135b                  |
| St. Bernard (G)             | Dayton/Campbell           | 1854-1924           | F282 S138f and fb           |
| St. Boniface (G)            | Ludlow/Kenton             | 1872-1924           | F282 S146m & S1354b         |
| St. Charles Borromeo        | Flemingsburg/Fleming      | 1900-1925           | F282 C363cc                 |
| St. Elizabeth Hospital      | Covington/Kenton          | 1861-1947           | F362.11 S137e               |
| St. Edward                  | Cynthiana/Harrison        | 1872-1925           | F282 C363cb                 |
| St. Francis (G)             | Dayton/Campbell           | 1853-1904           | F282 S138f and fb           |
| St. Francis de Sales        | Newport/Campbell          | 1912-1997           | F282 S138f                  |
| St. Francis Xavier          | Falmouth/Pendleton        | 1868-1925           | F282 C363 ca                |
| St. Henry                   | Elsmere/Kenton            | 1904-1924           | F282 H761c                  |
| St. James (I)               | Ludlow/Kenton             | 1887-1924           | F282 S1427ja                |
| St. James                   | Brooksville/Bracken       | 1860-1947           | F282 S1428j                 |
| St. John the Baptist (G)    | Wilder/Campbell           | 1859-1924           | F282 S143jo                 |
| St. John the Evangelist     | Carrollton/Carroll        | 1855-1925           | F282 S143je                 |
| St. John the Evangelist (G) | Covington/Kenton          | 1855-1981           | F282 S1437j                 |
| St. Joseph                  | Cold Spring/Campbell      | 1874-1924           | F282 S143jo                 |
| St. Joseph (G)              | Covington/Kenton          | 1856-1970           | F282 S143jok                |
| St. Joseph (G)              | C. Springs/Campbell       | 1843-1924           | F282 S143jo                 |
| St. Joseph                  | Warsaw/Gallatin           | 1862-1925           | F282 S143je                 |
| St. Mary                    | Alexandria/Campbell       | 1860-1927           | F282 S143jo                 |
| St. Mary                    | Morningview/Kenton        | 1860-1925           | F282 S143je                 |
| St. Patrick (I)             | Covington/Kenton          | 1872-1967           | F282 S149p & H761c          |
| St. Patrick                 | Maysville/Mason           | 1848-1925           | F282 C363cb and cc          |
| St. Paul                    | Florence/Boone            | 1862-1924           | F282 S143jo                 |
| St. Philip                  | Melbourne/Campbell        | 1910-1926           | F282 S1428j                 |
| St. Rose of Lima            | Mayslick/Mason            | 1885-1925           | F282 C363cc                 |
| St. Stephen (G)             | Newport/Campbell          | 1855-1924           | F282 S1427jb & S1534s       |
| St. Thomas                  | Ft. Thomas/Campbell       | 1895-1925           | F282 C363ca                 |
| St. Vincent de Paul         | Newport/Campbell          | 1916-1992           | F282 S155v                  |
| Sts. Peter and Paul (G)     | California/Campbell       | 1848-1925           | F282 C363ca                 |

(G) = German-Speaking Parish. (I) = English-Speaking Parish - Irish.



## Church Records - Protestant

| <b>Church</b>                    | <b>City/County</b>      | <b>Dates</b> | <b>Film Location</b> |
|----------------------------------|-------------------------|--------------|----------------------|
| Augusta Baptist                  | Augusta/Bracken         | 1907-1962    | F286 A923b           |
| Beaver Baptist                   | Cynthiana/Harrison      | 1809-1955    | F286 B386b           |
| Bellevue Baptist                 | Bellevue/Boone          | 1803-1914    | F286 B442b           |
| Big Bone Baptist                 | Big Bone/Boone          | 1823-1948    | F286 B529bc          |
| Boyer Presbyterian               | Harrison County         | 1919-1959    | F285 H323c           |
| Campbell County Baptist Assn.    | Campbell County         | 1836-1876    | F286 C129ba          |
| Central (Tabernacle) Baptist     | Maysville/Mason         | 1931-1985    | F286 C397b           |
| Christ United Church of Christ   | Ft. Thomas/Campbell     | 1908-1986    | F285.834 C554u       |
| Cynthiana Presbyterian           | Harrison County         | 1929-1996    | F285 H323c           |
| First German Evangelical         | Rising Sun/Indiana      | 1869-1919    | F286 R332b           |
| First German Presbyterian        | Cincinnati/Hamilton     | 1855-1915    | F286 R332b           |
| First Presbyterian               | Crescent Springs/Kenton | 1898-1933    | F285 C919s           |
| First Presbyterian               | Ludlow/Kenton           | 1867-1994    | F285 F527p           |
| First Twelve Mile Baptist        | Campbell County         | 1819-1863    | F286 F527t           |
| Florence Baptist                 | Florence/Boone          | 1893-1962    | F286 F632b           |
| Four Mile Baptist                | Campbell County         | 1819-1874    | F286 F773mb          |
| Ft. Mitchell Baptist             | Ft. Mitchell/Kenton     | 1924-1967    | F286 F736m           |
| German Evangelical Reformed      | Covington/Kenton        | 1862-1948    | F286 R332b           |
| Glencoe Baptist                  | Glencoe/Gallatin        | 1878-1956    | F286 G558b           |
| Grace Reformed                   | Covington/Kenton        | 1862-1995    | F286 R332b           |
| Grace United Church of Christ    | Covington, Kenton       | 1862-1949    | F285.834 G729u       |
| Immanuel Church of Christ        | Bromley/Kenton          | 1894-1956    | F285.834 I33u        |
| Immanuel M.E.                    | Covington/Kenton        | 1847-1937    | F286 R332b           |
| Kenton County Protestant Assn.   | Covington/Kenton        | 1945-1968    | F284 K37cp           |
| Lair Chapel Presbyterian         | Harrison County         | 1908-1926    | F285 H323c           |
| Madison Avenue Baptist           | Covington/Kenton        | 1857-1937    | F286 332b            |
| Mountain Island Baptist          | Owen                    | 1801-1836    | F286 R332b           |
| Pleasant Ridge Baptist           | Campbell County         | 1854-1980    | F286 M928i           |
| Pleasant View Baptist            | Owen                    | 1839-1888    | F286 P724r           |
| Salem Reformed                   | Cincinnati/Hamilton     | 1857-1932    | F286 P724v           |
| Sand Run Baptist                 | Hebron/Boone            | 1819-1972    | F286 R332b           |
| Second Reformed                  | Dayton/Montgomery OH    | 1852-1922    | F286 R332b           |
| Sharon Baptist                   | Gallatin                | 1825-1856    | F286 S531b           |
| St. John Church of Christ        | Bellevue/Campbell       | 1898-1987    | F284.1312 S143je     |
| St. John Congregation            | Covington/Kenton        | 1938-1977    | F285.8 S143j         |
| St. John Evangelical             | Bellevue/Campbell       | 1887-1987    | F284.1312 S143je     |
| St. John United Church of Christ | Newport/Campbell        | 1848-1986    | F285.834 S143ju      |
| St. Mark Evangelical Lutheran    | Campbell County         | 1894-1966    | F284.1312 S146m      |
| St. Paul                         | Alexandria/Campbell     | 1923-1883    | F284 S1493p and pa   |
| St. Paul Evangelical             | Covington/Kenton        | 1847-1937    | F286 R332b           |
| St. Paul Evangelical             | Cincinnati/Hamilton     | 1845-1920    | F286 R332b           |
| St. Paul United Church of Christ | Newport/Campbell        | 1862-1950    | F285.834 S149pu      |
| St. Peter Evangelical            | Cincinnati/Hamilton     | 1832-1932    | F286 R332b           |
| St. Stephen Episcopal            | Covington/Kenton        | 1907-1977    | F282.73 S149s        |
| Western Baptist Institute        | Covington/Kenton        | History      | F286 J29h            |
| Willow Baptist                   | Brooksville/Bracken     | 1818-1964    | F286 W739b           |
| Zion German Evangelical          | Cincinnati/Hamilton     | 1843-1913    | F286 R332b           |

## **City Directories**

Covington, Newport and Vicinity, 1834; 1839-1840; 1856-present. Various editions in microfilm and print formats. Microfilm 910.25 C873

Cincinnati, 1902-1935; 1951-present. In microfilm and print formats. Microfilm 910.25 C574c  
Various other city directories are available for Kentucky cities including: Ashland, Bowling Green, Corbin, Danville, Frankfort, Hopkinsville, Lexington, Louisville, Maysville and Paducah. Check the catalog for availability. Microfilm copies are found at 910.25.

## **City Records**

Bellevue City Records, 1879-1885; 1889-1892. Microfilm 320.B442

Bromley Volunteer Fire Dept. Minutes and Rosters 1900-1913. Microfilm 320.85 B868f

Central Covington Clerk: Board of Trustee Minutes 1880-1906. Microfilm 320.85 C397m

Covington Clerk: Board of Equalization, 1899-1940. Microfilm 320.85 C873be

Covington Clerk: City Commission Minutes 1914-1993. Microfilm 320.85 CC873cm

Covington Clerk: Council Minutes 1837-1914. Microfilm 320.85 C873cm

Covington Clerk: Minutes 1888-1952. Microfilm 320.85 C873v

Covington Clerk: Ordinances 1887-1928. Microfilm 320.85 C873o

Covington Police Department: Records of Arrest 1960-1977. Microfilm 320.85C873p

Crescent Springs: Clerk Records 1957-1996. Microfilm 320.85 C919

Crestview Hills: Clerk Records. Microfilm 320.85 C922

Crestview Hills: Records from the Office of the Clerk. Microfilm 320.85 C922

Independence: Clerk Records. Microfilm 320.85 I38

Latonia City Clerk Records 1907-1917. Microfilm 320.85 L358

Lexington: Certificates of Town Lots 1786-1814. Microfilm 976.9 M678r

Lexington: Minute Book of Trustees 1781-1791. Microfilm 976.9 M678r

Ludlow: Board of Health Minutes. Microfilm 320.85 L945bh

Ludlow: City Council Minutes. Microfilm 320.85 L945m

Ludlow: City Council Ordinances. Microfilm 320.85 L945o

Ludlow: Incorporation, City Charter and Correspondence. Microfilm 320.85 L945c

Ludlow: Mayor's Court 1881-1891. Microfilm 320.85 L945mc

Ludlow: Vol. Fire Department Minutes and Rosters 1884-1946. Microfilm 320.85 L945vf

Ludlow Public School Student Records and Board Minutes 1872-1912. Microfilm 320.85 L945is

Sunny Acres: Clerk records. Microfilm 320.85 S958

South Hills: Documents and Plat Maps. Microfilm 320.85 F736w

Taylor Mill: Clerk records 1956-1997. Microfilm 320.85 T247

Villa Hills: Minutes and Ordinances. Microfilm 320.85 V712

West Covington City Clerk Records 1907-1917. Microfilm 320.85 L358

Winston Park: Clerk Records 1930-1972. Microfilm 320.85 W783

## **County Records**

Campbell County: Court of Quarter Sessions, Case Files 1795-1934. Microfilm 347.013 C193c

Kenton County: Minute Book 1869-1875. Microfilm 976.935 K367m2

Kenton County: Cancelled Voter Registration Forms 1936-1972. Microfilm 320.83 K37

Kenton County: Enumeration Return of School Aged Children 1912-1914; 1921-1922. Microfilm 320.83 K37be

Kenton County: School Census Cards 1915-1977. Microfilm 320.83 K37be

Kenton County: Voter Registration Forms 1936-1972. Microfilm 320.83 K37v

Kenton County: Circuit Court Index to Civil Cases 1940-1977. Microfilm 347.013 K37cc

Kenton County: General Cross Index to Real Estate 1901-1991. Microfilm 347.013 K37xr  
Kenton County: Court Official Records. Microfilm 347.013 K37c Indp  
Kenton County: Court Order Books 1858-1939. Microfilm 347.013K37o  
Kenton County: General Index to Record Instruments 1939-1982. Microfilm 347.013 K37x  
Kenton County: Inventory, Appraisal, and Sale Bill Books 1858-1939. Microfilm 347.013K37ia  
Kenton County: Constable Bonds. 1840-1877. Microfilm 976.935 K367m2  
Kenton County: Sheriff Bonds 1841-1852. Microfilm 976.935 K367m2  
Kenton County: Sheriff and County Bonds 1853-1859. Microfilm 976.935 K367m2  
Owen County: Court Order Books 1819-1977. Microfilm 347.013 O97c  
Virginia Counties: Municipal Court Records. Microfilm 347.013 V817c

## **Family Files**

Family files include various materials such as:

- Correspondence between genealogists and the Kenton County Public Library (requests for information and responses)
- Ancestral charts and family group sheets

The geNKY database at <http://genealogy.kentonlibrary.org/genky/gendb.php> contains an index to the family files.

## **Federal Records**

Records of the Education Division of the Bureau of Refugees, Freedmen, and Abandoned Lands, 1865-1871. Microfilm 973.714 R311e  
United States Court House & Post Office Building Records, Covington: Employee Time and Record Book 1912-1920 and Letter Book 1905-1911. Microfilm 347.732 U58c  
Letters Received by the Department of Justice from the State of Kentucky, 1871-1884. Microfilm 353.4 J96l

## **Funeral Home Records**

Donnelly Funeral Home, Covington 1873-1937. Microfilm 363.75 K37d  
Middendorf Funeral Home, Covington 1912-1923. Microfilm 363.75 K37m  
Tharp and Stith Funeral Home, Alexandria and Dayton 1929-1945. Microfilm 363.7 C193t

## **Guardian Bonds**

Campbell County Guardian Bonds 1863-1945. Microfilm 346.018 C193g  
Kenton County Guardian Bonds 1852-1866. Microfilm 976.935 K367m2

## **Local History Files**

The Kenton County Public Library maintains a collection of local history vertical files detailing the history of Northern Kentucky. The [geNKY database](#) contains an index to the local history files. Selected local history files materials have been digitized and are viewable from the geNKY database.

## **Military Records**

Kenton County, Kentucky in the World War 1917-1919 (Information on Kenton Co. Soldiers.) Microfilm 976.935 H673k  
Kentucky War Records 1812, 1861-1865. Microfilm 976.9K37w  
Name Index to Report of the Adjutant General of the State of Kentucky (Union) Vol. 1&2 1861-1866. Microfilm 355.009 N174i

Pensions of Soldiers of the Revolutionary War, War of 1812 and Indian Wars from Kentucky.  
Microfilm 929.3 B967a

Report of the Adjutant General of Kentucky, KY Volunteers in the War with Spain 1898-1899.  
Microfilm 976.935 K367m2

Report of the Adjutant General of Kentucky, Kentucky Mexican War Veterans.  
Microfilm 976.935 K367m2

Returns from U.S. Military Posts: Covington & Newport, Sept. 1862-Oct. 1865.  
Microfilm 355.009 R439

Returns from U.S. Military Posts: Newport Barracks, Apr. 1839-Dec.1858.  
Microfilm 355.009 R439

Returns from United States Military Posts: Newport Barracks, Jan. 1858-Dec. 1871.  
Microfilm 355.009 R439

Returns from United States Military Posts: Newport Barracks, Jan. 1871-Dec. 1882.  
Microfilm 355.009 R439

Returns from United States Military Posts: Newport Barracks, Jan. 1883-Nov. 1894.  
Microfilm 355.009 R439

Returns from United States Military Posts: Fort Thomas, Aug. 1890-Dec.1916.  
General Hospital Records, May 1898-February 1899. Microfilm 355.009 R439

Returns from United States Military Posts: Camp Thomas, Ohio, Dec. 1861-Nov. 1865.  
Microfilm 355.009 R439

Service Records - Confederate Soldiers from Kentucky. Microfilm 355.009 S491r

Veterans Discharge Books Vol. 1-3, Owen County, Kentucky, 1924-1992.  
Microfilm 355.009 V586o

Service Records - Confederate Soldiers from Tennessee. Microfilm 355.009 S491t

Service Records - Confederate Soldiers from Texas. Microfilm 355.009 S491tx

World War I Selective Service Draft Registration Cards – Kentucky. Microfilm 355.22363 W927d

## **Mortality Schedules**

Kentucky Mortality Schedules 1850, 1860, 1870, 1880 (in alphabetical order by county.)  
Microfilm 929.31 K37m. Also available on Ancestry.

## **Naturalization Records**

Kenton County Naturalization Books, 1891-1906. Microfilm 323.623 K37n



## Newspapers

Many other smaller publications are available. Check the KCPL catalog for details or search the [Northern Kentucky Newspaper Index](#).

| Code        | Newspaper Name              | Dates Covered                                                                                              |
|-------------|-----------------------------|------------------------------------------------------------------------------------------------------------|
| <b>AT</b>   | Augusta Telegraph           | Oct 5, 12, Nov 16, Dec 7, 14, 1833                                                                         |
| <b>BCB</b>  | Boone County Banner         | Jan 1896-July 1898                                                                                         |
| <b>CBC</b>  | Cincinnati Business Courier | 1984-Apr 1999                                                                                              |
| <b>CE</b>   | Cincinnati Enquirer Ky.Ed.  | 1862-1869; 1899-Current                                                                                    |
| <b>KTS</b>  | Cincinnati Times-Star       | May 5, 1902-July 19, 1958                                                                                  |
| <b>CT</b>   | Commercial Tribune          | June 1, 1901-Oct 6, 1914                                                                                   |
| <b>COM</b>  | Commonwealth                | July 6, 1876-Feb 5, 1880                                                                                   |
| <b>CC</b>   | Covington Courier           | Sept 20, 1902-Sept 11, 1903; Feb 6, Sept 18, Oct 2, 9, 1903; Aug 12-Sept 30, 1904; Mar 17 and May 12, 1905 |
| <b>CDN</b>  | Covington Daily News        | Aug 21, 1875                                                                                               |
| <b>CJ</b>   | Covington Journal           | Jan 5, 1849-Aug 30, 1862; Feb 8, 1868-Sept 30, 1876                                                        |
| <b>CK</b>   | Covington Kentuckian        | July 18, Aug 15, 1855                                                                                      |
| <b>CWG</b>  | Covington Weekly Globe      | Jan 27, 1859                                                                                               |
| <b>DC</b>   | Daily Commonwealth          | Sept 30, 1877-Dec 18, 1877; 1879-1884; March 19, 1892                                                      |
| <b>DN</b>   | Dixie News                  | Jan 1984-Current                                                                                           |
| <b>EN</b>   | Erlanger News               | Oct 20, 1928                                                                                               |
| <b>EXTR</b> | Extra                       | Oct 23, 1897                                                                                               |
| <b>FAO</b>  | Falmouth Outlook            | 1907-1959                                                                                                  |
| <b>FML</b>  | Fort Mitchell Living        | March 1984-May 2002                                                                                        |
| <b>FTL</b>  | Fort Thomas Living          | 1980-1986                                                                                                  |
| <b>KCR</b>  | Kenton County Recorder      | May 7, 1980-2010                                                                                           |
| <b>KH</b>   | Kentucky Herald             | Sept 2, 1927                                                                                               |
| <b>KP</b>   | Kentucky Post               | Dec 31, 1890; Jan 2, 1892-Dec. 31, 2007                                                                    |
| <b>KSJ</b>  | Kentucky State Journal      | Jan 4, 1881-1894                                                                                           |
| <b>LVR</b>  | Licking Valley Register     | July 21, 1841-Dec 27, 1845 and Jan. 3, 1846-Nov. 5, 1847                                                   |
| <b>NL</b>   | Newport Local               | Sept 5, 1876-1878                                                                                          |
| <b>NE</b>   | News Enterprise             | Nov 19, 1956-Jan 9, 1991                                                                                   |
| <b>PCF</b>  | Pikes Campaign Flag         | July 17, 1852                                                                                              |
| <b>SA</b>   | Saturday Advertiser         | Jan 25, 1873-June 7, 1873                                                                                  |
| <b>T</b>    | Ticket                      | April 8, 1875-Jan 5, 1878                                                                                  |

## Passenger Lists

Ship Passenger Lists, New York and New Jersey 1600-1825. KR 929.3 P287ana

Germans to America: Lists of Passenger Arriving at U.S. Ports 1850-1895. KR 929.343 G373a

Irish Passenger Lists, 1847-1871: Lists of Passengers. KR 929.3415 I68p

German Immigrants: Lists of Passengers bound from Bremen to New York, 1847-1854; 1855-1862; 1863-1867; 1868-1871 with Places of Origin. KR 929.343 Z72g

Passenger Arrivals at the Port of New York, 1820-1829; 1830-1832. KR 929.3 B477p

Passenger Arrivals at the Port of Baltimore, 1820-1834. KR 929.3 T314p



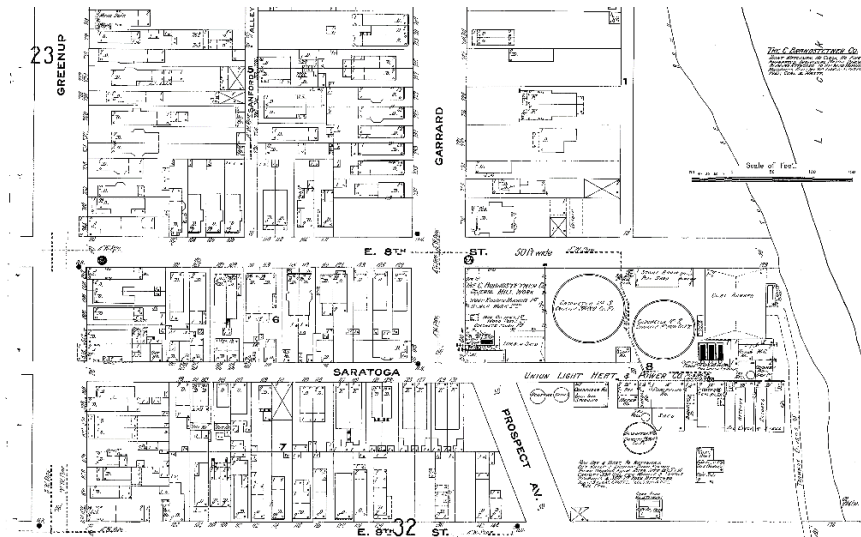
Passengers to America: A Consolidated Ship Passenger Lists from the New England Historical and Genealogical Register. KR 929.3 P287a  
 Italians to America: Lists of Passengers Arriving at U.S. Ports, 1880-1899. KR 929.3 I88a  
 Immigrants to the Middle Colonies: A consolidation of Ship Passenger Lists. KR 929.3 I33m  
 The Famine Immigrants: Lists of Irish Immigrants Arriving at the Port of New York, 1846-1851. KR 929.3 F198I  
 Passenger and Immigration Lists Index. KR 929.3 P287I  
 Ship Passenger Lists: Pennsylvania and Delaware, 1641-1825. KR 929.3 P287ap  
 New World Immigrants. KR 929.3 N532w  
 Many other passenger lists can also be found on Ancestry Library Edition and FamilySearch.

## Photograph Collection

The Kenton County Public Library began collecting historical photographs of Northern Kentucky in 1978. Since then, the collection has grown to over 110,000 images, including many photographs from the defunct *Kentucky Post* newspaper. Digital copies of the library's photographs can be found on the *Faces and Places: The Northern Kentucky Photograph Archive* at <http://www.kentonlibrary.org/genphotos/>.

## Property Records

Campbell County Deed Indexes. Microfilm 346.0438 C193d  
 Kenton County (Independence) Index to Real Estate 1835-1912. Microfilm 346.0438 K37i  
 Kenton County (Independence) Index to Real Estate 1894-1947. Microfilm 346.0438 K37i  
 Kenton County: General Index to Deeds 1892-1900. Microfilm 346.0438 K37i  
 Kenton County Original Plats and Index. Microfilm 346.0438 K37  
 Lincoln County Deeds 1782-1800. Microfilm 976.9 M678r  
 Ludlow Plat Books 1895-1927. Microfilm 346.0438 K37L  
 Nicholas County Deed Abstracts. Microfilm 929.3 B967g  
 Owen County Deeds 1819-1988. Microfilm 346.0438 O39d  
 Owen County Mortgage Books 1927-1990. Microfilm 346.0438 O39m



## Special Collections

The Covington Library serves as the official repository for many local community organizations and institutions. Access to these materials can be found on the library website at <http://www.kentonlibrary.org/genealogy/special-collections> or by inquiring with the Local History & Genealogy Department within the library.

## Tax Records

Microfilm 929.3 Date ranges do not always indicate a complete set of records.

| County          | Dates     | County                | Dates     |
|-----------------|-----------|-----------------------|-----------|
| Adair County    | 1802-1824 | Harrison County       | 1794-1808 |
| Boone County    | 1799-1878 | Jefferson County      | 1789-1799 |
| Bourbon County  | 1787-1806 | Kenton County         | 1848-1892 |
| Bracken County  | 1797-1875 | Kenton Co. Delinquent | 1922-1926 |
| Campbell County | 1795-1875 | Letcher County        | 1843-1875 |
| Casey County    | 1842-1861 | Madison County        | 1787-1804 |
| Fayette County  | 1787-1804 | Mason County          | 1790-1809 |
| Floyd County    | 1793-1857 | Mercer County         | 1789-1810 |
| Gallatin County | 1799-1857 | Owen County           | 1819-1853 |
| Garrard County  | 1797-1819 | Pendleton County      | 1799-1842 |
| Grant County    | 1820-1856 | Scott County          | 1794-1821 |
| Green County    | 1795-1834 | Woodford County       | 1790-1815 |

## *Guide to Birth and Death Records in Kentucky*

- The Commonwealth of Kentucky did not keep any records of births or deaths prior to 1852.

### 1852-1910

- Generally, birth and death records exist for each county during the following time periods: 1852-1861 and 1874-1878. Many counties also kept records in the 1890s and early 1900s. These series of records are often referred to as the Sutton Records and are arranged by county. The Sutton Records can be found at the following call number: Microfilm 353.59 K372v
- Many of the records can also be found in book form. Consult the [KCPL catalog](#) for more information.
- Sutton Records consist of chronological lists of births, deaths and marriages. Detailed information including names of parents, location, dates and cause of death are often provided.

The four largest cities in the Commonwealth independently maintained records of births and deaths within their boundaries:

|                      | <b>Covington</b>                                     | <b>Lexington</b>                                       | <b>Louisville</b>                                    | <b>Newport</b>                                         |
|----------------------|------------------------------------------------------|--------------------------------------------------------|------------------------------------------------------|--------------------------------------------------------|
| <b>Birth Records</b> | 1896-1911                                            | 1900-1910                                              | 1898-1910                                            | 1907-1911                                              |
| <b>Death Records</b> | 1881-1915                                            | 1894-1910                                              | 1866-1910                                            | 1884-1928                                              |
| <b>Call Number</b>   | Microfilm<br>353.59 K37b<br>Microfilm<br>353.59 K37d | Microfilm<br>353.59 F284b<br>Microfilm<br>353.59 F284d | Microfilm<br>353.59 J45b<br>Microfilm<br>353.59 J45d | Microfilm<br>353.59 C193b<br>Microfilm<br>353.59 C193d |

- The city of Bellevue in Campbell County also maintained death and burial records, 1896-1900 and 1907-1910.

## 1911 and After

- Records are available statewide.
  - Birth records become available 100 years after the date in which they were kept.
  - Death records become available 50 years after the date in which they were kept.
- The call number for Kentucky death records is Microfilm 353.59 V868cd.

## Vital Statistics – Birth, Marriage and Death

*Kentucky Birth Index (1911-1999), Birth Records (1852-1910), Death Index (1911-2000), Death Records (1852-1965) and County Marriages (1783-1965) are available on Ancestry.*

Annie Burns Vital Statistics Collection: Miscellaneous Birth, Marriage and Death Records for Various Kentucky Counties. Microfilm 929.3 M359r and 929.3 M359ra

Bellevue Death Records 1896-1899, Burial Records 1896-1900, 1907-1910.

Microfilm 353.59 C193db

Campbell County Births (Newport) (1907-1911). Microfilm 353.59 C193b

Campbell County Deaths (Newport) (1884-1928). Microfilm 353.59 C193d

Campbell County Marriages (1795-1851) Includes Index. Microfilm 353.59 C193m

Clark County Marriages (various Bonds and Indexes) (1793-1911). Microfilm F353.59 M359cl.

Fayette County (Lexington) Births (1907-1910). Microfilm 353.59 F284b

Fayette County (Lexington) Deaths (1886-1910). Microfilm 353.59 F284d

Jefferson County Births (Louisville) (1898-1910). Includes Index. Microfilm 353.59 J45b

Jefferson County Deaths (Louisville) (1866-1910). Includes Index. Microfilm 353.59 J45d

Kenton County Births (Covington) (1896-1911). Microfilm 353.59 K37b

Kenton County Deaths (Abstracts) (1852-1859 and 1876-1877). KR 976.935 W642a.

Kenton County Deaths (Covington) (1881-1915). Microfilm 353.59 K37d

Kenton County Marriage Records: Covington (1874-1912, to Bk. 44). Microfilm 353.59 K37m

Kenton County Marriage Records: Independence (1840-1966). Microfilm 353.59 K37mi

Kentucky Birth Records Index (Entire State) (1911-1995). Microfiche.

Kentucky Birth, Marriage and Death Records (1852-1910) (Incomplete) Microfilm 353.59 K372v

Kentucky Directory of Births and Deaths (1911-1954). Microfilm 353.59 K37v

Kentucky Death Records Index (Entire State) (1911-1995). Microfiche.

Kentucky Death Certificates (Entire State) (1911- ongoing) Microfilm 353.59 V868cd

Kentucky Divorce Records Index (1974-1996). Microfiche.

Kentucky Marriage Records Index (1973-1995). Microfiche.  
Mason County Marriages (Bonds and Returns) (1788-1949). Microfilm 353.59 M359ma  
Owen County Marriage Records (1819-1922). Microfilm 353.59 O97

Kentucky Vital Statistics: Sutton Records - Birth, Marriage and Death Records 1852-1907.  
Microfilm 353.59 K372v (Dates are not inclusive).

**Reel 1:** Adair 1852-1907; Allen 1852-1904; Anderson 1852-1878; **Reel 2:** Ballard 1852-1894; Barren 1852-1878; Bath 1852-1901; **Reel 3:** Boone 1852-1879; Bourbon 1852-1878; Boyd 1859-1907; Boyle 1852-1907; **Reel 4:** Bracken 1852-1905; Breathitt 1852-1878; Breckinridge 1852-1904; Bullitt 1852-1907; Butler 1853-1907; **Reel 5:** Caldwell 1852-1878; Calloway 1852-1907; Campbell 1852-1907; Carlisle 1901-1907; Carroll 1852-1860; Carter 1852-1907; **Reel 6:** Casey 1852-1907; Christian 1852-1907; Clark 1852-1904; **Reel 7:** Clay 1852-1907; Clinton 1852-1904; Crittenden 1852-1907; Cumberland 1852-1907; **Reel 8:** Daviess 1853-1874; Edmondson 1852-1893; Estill 1852-1878; **Reel 9:** Fayette 1852-1905; Fleming 1852-1878; Floyd 1852-1904; Franklin 1852-1909; Fulton 1852-1904; **Reel 10:** Gallatin 1852-1878; Garrard 1852-1878; Grant 1852-1907; Graves 1852-1907; **Reel 11:** Grayson 1852-1907; Green 1852-1878; Greenup 1852-1904; **Reel 12:** Hancock 1852-1907; Hardin 1852-1874; Harlan 1852-1904; Harrison 1852-1878; Hart 1852-1907; **Reel 13:** Henderson 1852-1907; Henry 1852-1877; Hickman 1852-1904; Hopkins 1852-1907; **Reel 14:** Jackson 1858-1904; Jefferson 1852-1892; **Reel 15:** Jessamine 1852-1907; Johnson 1852-1904; **Reel 16:** Kenton 1852-1907; Knox 1852-1907; Larue 1907; **Reel 17:** Laurel 1852-1904; Lawrence 1852-1907; Lee 1852-1901; Leslie 1852-1879; Letcher 1852-1907; Lewis 1852-1878; **Reel 18:** Lincoln 1852-1878; Livingston 1852-1907; Logan 1852-1878; Lyon 1852-1908; **Reel 19:** Madison 1852-1907; Magoffin 1852-1877; Marion 1852-1904; Marshall 1852-1907; Martin 1852-1878; Mason 1852-1907; **Reel 20:** McCracken 1852-1908; McLean 1852-1907; Meade 1852-1907; Menifee 1852-1878; Mercer 1852-1860; Metcalfe 1852-1907; Monroe 1852-1907; **Reel 21:** Montgomery 1852-1894; Morgan 1852-1904; Muhlenburg 1852-1907; **Reel 22:** Nelson 1852-1907; Nicholas 1852-1878; **Reel 23:** Ohio 1852-1907; Oldham 1852-1879; Owen 1852-1875; Owsley 1852-1904; **Reel 24:** Pendleton 1852-1879; Perry 1852-1859; Pike 1852-1907; Powell 1852-1878; Pulaski 1852-1878; **Reel 25:** Robertson 1874-1878; Rockcastle 1852-1878; Rowan 1856-1906; Russell 1852-1904; **Reel 26:** Scott 1852-1879; Shelby 1852-1878; Simpson 1852-1907; Spencer 1852-1907; **Reel 27:** Taylor 1852-1904; Todd 1852-1904; Trigg 1852-1907; Trimble 1852-1894; **Reel 28:** Union 1852-1878; Warren 1852-1907; Washington 1852-1878; Wayne 1852-1878; Webster 1852-1877; **Reel 29:** Whitley 1852-1904; Wolfe 1861-1904; Woodford 1852-1878.

## Wills

Adair County Wills 1801-1851. Microfilm 929.3 M359r  
Allen County Wills and Settlements 1815-1902. Microfilm 929.3 M359r  
Bath County Wills. Microfilm 929.3 M359r  
Bracken County Wills 1769-1851. Microfilm 929.3 G326ah  
Campbell County Will Index 1820-1926. Microfilm 929.3 W741c  
Clark County Will Abstracts 1792-1851. Microfilm 929.3 G326ah  
Fleming County Wills. Microfilm 929.3 G326ah  
Grant County- Index to Will Book A. 1820-1833. Microfilm 976.9 M678r  
Grant County Wills 1820-1833. Microfilm 976.9 M678r  
Henderson County Wills 1819-1850 with Index and 1799-1851. Microfilm 976.9 M678r  
Hopkins County Wills 1801-1881. Microfilm 929.3 M359ra

Kenton County Will Books 1858-1915. Microfilm 929.3 W741k  
 Kenton County Wills (Independence) 1840-1906. Microfilm 929.3 W741ki  
 Kenton County Wills (Covington Courthouse) 1915-1970. Microfilm 929.3 W741kc  
 Laurel County Wills 1824-1843. Microfilm 929.3 M359ra  
 Logan County Wills 1792-1851. Microfilm 976.9253 W741a  
 Mason County Wills 1813-1823. Microfilm 976.9253 W741a  
 Nelson County Wills 1784-1851. Microfilm 929.3 B967g  
 Nicholas County Record of Wills. Microfilm 929.3 B967g  
 Owen County Will Books 1820-1987. Microfilm 929.3 W741o  
 Owen County Settlement Books 1869-1977. Microfilm 929.3 W741os  
 Warren County Will Abstracts. Microfilm 929.3 B967g  
 Washington County Wills 1792-1858. Microfilm 929.3 B967gt  
 Woodford County Wills 1788-1851. Microfilm 976.9465 W747c





## Kenton County Public Library Call Numbers by County

|              |          |               |                |            |          |
|--------------|----------|---------------|----------------|------------|----------|
| Adair        | 976.9675 | Grant         | 976.9395       | Mason      | 976.9323 |
| Allen        | 976.9732 | Graves        | 976.993        | Meade      | 976.9852 |
| Anderson     | 976.9463 | Grayson       | 976.9842       | Menifee    | 976.9583 |
| Ballard      | 976.996  | Green         | 976.9695       | Mercer     | 976.9485 |
| Barren       | 976.972  | Greenup       | 976.9293       | Metcalfe   | 976.9693 |
| Bath         | 976.9555 | Hancock       | 976.9862       | Monroe     | 976.9685 |
| Bell         | 976.9123 | Hardin        | 976.9845       | Montgomery | 976.9553 |
| Boone        | 976.9363 | Harlan        | 976.9154       | Morgan     | 976.9253 |
| Bourbon      | 976.9423 | Harrison      | 976.9413       | Muhlenberg | 976.9832 |
| Boyd         | 976.927  | Hart          | 976.9715       | Nelson     | 976.9495 |
| Boyle        | 976.9523 | Henderson     | 976.987        | Nicholas   | 976.9417 |
| Bracken      | 976.9325 | Henry         | 976.9385       | Ohio       | 976.9835 |
| Breathitt    | 976.919  | Hickman       | 976.998        | Oldham     | 976.9383 |
| Breckinridge | 976.9854 | Hopkins       | 976.9823       | Owen       | 976.9393 |
| Bullitt      | 976.9453 | Jackson       | 976.9183       | Owsley     | 976.9176 |
| Butler       | 976.9755 | Jefferson     | 976.944        | Pendleton  | 976.933  |
| Caldwell     | 976.9815 | Jessamine     | 976.9483       | Perry      | 976.9173 |
| Calloway     | 976.992  | Johnson       | 976.9245       | Pike       | 976.923  |
| Campbell     | 976.934  | <b>Kenton</b> | <b>976.935</b> | Powell     | 976.9585 |
| Carlisle     | 976.997  | Knott         | 976.9165       | Pulaski    | 976.963  |
| Carroll      | 976.9373 | Knox          | 976.9125       | Robertson  | 976.9415 |
| Carter       | 976.928  | Larue         | 976.9713       | Rockcastle | 976.9623 |
| Casey        | 976.966  | Laurel        | 976.9143       | Rowan      | 976.957  |
| Christian    | 976.978  | Lawrence      | 976.926        | Russell    | 976.9655 |
| Clark        | 976.954  | Lee           | 976.9185       | Scott      | 976.9425 |
| Clay         | 976.9145 | Leslie        | 976.9152       | Shelby     | 976.9435 |
| Clinton      | 976.9653 | Letcher       | 976.9163       | Simpson    | 976.9735 |
| Crittenden   | 976.9893 | Lewis         | 976.9295       | Spencer    | 976.9455 |
| Cumberland   | 976.9683 | Lincoln       | 976.9625       | Taylor     | 976.9673 |
| Daviess      | 976.9864 | Livingston    | 976.9895       | Todd       | 976.977  |
| Edmonson     | 976.9752 | Logan         | 976.976        | Trigg      | 976.979  |
| Elliott      | 976.9255 | Lyon          | 976.9813       | Trimble    | 976.9375 |
| Estill       | 976.959  | McCracken     | 976.995        | Union      | 976.9885 |
| Fayette      | 976.947  | McCreary      | 976.9135       | Warren     | 976.974  |
| Fleming      | 976.956  | McLean        | 976.9826       | Washington | 976.9493 |
| Floyd        | 976.922  | Madison       | 976.953        | Wayne      | 976.964  |
| Franklin     | 976.9432 | Magoffin      | 976.9215       | Webster    | 976.9883 |
| Fulton       | 976.999  | Marion        | 976.951        | Whitley    | 976.9132 |
| Gallatin     | 976.9365 | Marshall      | 976.991        | Wolfe      | 976.9213 |
| Garrard      | 976.9525 | Martin        | 976.9243       | Woodford   | 976.9465 |

K = denotes Kentucky Collection (Circulating)

KR = denotes Kentucky Reference Collection (Non-circulating)



*Preserve. Enrich. Inspire.*

**Kenton County Public Library**  
**Local History & Genealogy Department**  
**502 Scott Blvd.**  
**Covington, KY 41011**  
**Phone: (859) 962-4070**  
**Email: [History @kentonlibrary.org](mailto:History@kentonlibrary.org)**  
**Web Site: [www.kentonlibrary.org/genealogy](http://www.kentonlibrary.org/genealogy)**



XVI: February 2021