

# *Local History & Genealogy Guide*



**Kenton County Public Library  
Local History & Genealogy Department  
502 Scott Blvd., Covington, KY 41011  
(859) 962-4070 [www.kentonlibrary.org/genealogy](http://www.kentonlibrary.org/genealogy)**

**Hours:  
By Appointment  
Mon - Wed 9-5, Thur 9-9, Fri 9-5, Sat 9-5**

**XVI: February 2021**

# ***Kenton County Public Library Local History & Genealogy Collection***

The Kenton County Public Library houses one of the most significant collections of local history and genealogy materials in Kentucky. The library's book and microfilm collections include materials on every county in the Commonwealth with a special emphasis on Northern Kentucky.

Among the major sources available in the local history and genealogy collections include Kentucky census records and indexes from 1810, newspapers, tax records, Northern Kentucky church records, and Kentucky birth, marriage and death records. The local history vertical files include information on Northern Kentucky people, institutions, schools, associations and other related topics. The library's own [\*Northern Kentucky Newspaper Index\*](#) is a significant resource for genealogy and local history research, providing a guide for more than one hundred years of Northern Kentucky publications including the *Kentucky Post*, *Kentucky Times-Star*, and the *Enquirer*. The library also maintains its [\*Faces and Places\*](#) photographic database with over 100,000 images of local citizens, architecture, and events.

***This user guide will provide you with an outline of the major resources available at the Kenton County Public Library. Many other sources are also available for genealogy and local history use. Please consult the library's online catalog or inquire at the Local History desk at (859) 962-4070 for suggestions on additional materials.***

## **Online Resources and Microfilm Collection Index**

**Online Resources 2-3**

**Associations 4**

**Atlases and Maps 4**

**Biography/Personal Papers 5**

**Cemetery Records 5-6**

**Census Records 6**

**Church Records 7-8**

**City Directories 9**

**City Records 9**

**County Records 10**

**Family Files 10**

**Federal Records 10**

**Funeral Home Records 10**

**Guardian Bonds 10**

**Local History Files 11**

**Military Records 11**

**Mortality Records 11**

**Naturalization Records 12**

**Newspapers 12**

**Passenger Lists 12**

**Photograph Collection 13**

**Property Records 13**

**Special Collections 14**

**Tax Records 14**

**Vital Statistics 15-17**

**Wills 16-17**

**KY Collection Call Numbers 18**

## **Online Resources**

See our web page at [www.kentonlibrary.org/genealogy](http://www.kentonlibrary.org/genealogy).

*The following databases can be accessed at all three KCPL branches.*

### **Ancestry Library Edition**

- United States Federal Census records from 1790 to 1940.
- Military records and passenger lists.
- Birth, marriage, and death records.

### **FindMyPast**

- Covers the U.S., Canada, Great Britain and Ireland.
- Census, birth, marriage, and death records.
- Church records from the Archdiocese of Cincinnati and several other U.S. cities.

*The following databases can be accessed at all three KCPL branches. Home access requires a KCPL library card.*

### **NewspaperArchive**

- National and international papers.
- Digital images.

### **Cincinnati/Kentucky Historical Enquirer**

- Includes digital images and covers 1841-2009.

### **Fold3**

- Digitized collections from the National Archives and others.
- Strong on military information, especially Civil War.
- 1860 and 1930 federal censuses.
- City directories, passport applications, newspapers, and vital records.

### **HeritageQuest Online**

- Freedman's Bank records.
- Selected Revolutionary War pension and bounty land applications.
- Digital book collection. Over 25,000 local history and genealogy publications.
- U.S. Serial Set. Information from the Memorials, Petitions and Private Relief Actions of the U.S. Congress.

### **Louisville Courier Journal Historical**

- Searchable full text articles and digital images from 1830-1922.

### **Chicago Defender**

- Predominantly African American news, local, state, and national.
- Covers 1909-1975.

### **NewsBank**

- Full-text access to the Kentucky and Cincinnati Post (April 1990 to December 2007) as well as other newspapers in the region.

### **Sanborn Insurance Maps**

- Digital images of 19<sup>th</sup> and 20<sup>th</sup> century Kentucky city maps.

### **MyHeritage (formerly WorldVitalRecords)**

- U.S. Federal Census records; military records; vital records; enhanced Social Security Death Index records; full text of modern U.S. newspaper obituaries.
- 28 million family trees.

*The following indexes are free and searchable from [www.kentonlibrary.org/genealogy](http://www.kentonlibrary.org/genealogy)*

### **Northern Kentucky Newspaper Index**

- Contains over one million entries.
- Includes digital images of many older newspapers.
- Index currently covers 1835 to 1936, 1940-42, and 1982 to the present.

### **geNKY - Northern Kentucky Genealogy Database**

- Some of the collections to be found in this database are:

Northern Kentucky High School Yearbook Index; Northern Kentucky Mexican-American War Veterans 1846-1848; St. Elizabeth Hospital Patient Records 1861-; Louisville & Nashville Railroad Brakeman Records 1906-1916; Northern Kentucky Real Estate records; Ludlow Mayor's Court Records Index 1881-1891; Civil War Union Veterans Burial List for Kentucky; St. James Parish, Ludlow, Liber Status Animarum (Parish Census) 1894 and 1913; St. Mary Cemetery Records, Ft. Mitchell, 1881-1996; World War I Service Records (Kenton Co.); Linden Grove Cemetery Records, Covington 1868-1998; Mary E. Smith African American Cemetery Tombstone Records, Elsmere, 1950-1967.

### **Faces and Places: Northern Kentucky Photographic Archives**

- Contains over 118,000 digitized photographs.
- Fully searchable by subject and keyword.
- Additional images added on a regular basis.



## **Microfilm Collection**

### **Associations**

Catholic Order of Foresters, St. Stephen Court 1380, Newport. Minute Books 1911-1946. Microfilm 267.242 C363f 1911-1946  
Confederate Veterans Association of Kentucky. Microfilm 061.69 C748v  
Kenton Co. Bar Assoc. Articles of Incorporation & Minutes 1901-12. Microfilm 976.935 K367m  
Kenton County Humane Society Minute Book 1895-1918. Microfilm 976.935 K367m.  
Knights of Pythias, Lodge #49. Microfilm 366.2 K71pd  
Latonia Agricultural Association, Official Proceedings 1882-1909. Microfilm 976.935 K367m  
Lewisburg Neighborhood Association 1993-2000. Microfilm 976.935 L677n  
Northern Kentucky Council for Retarded Children. Microfilm 061.69 N874c  
Northern Kentucky YMCA. Microfilm 267.3 Y78  
Odd Fellows, Goodwill Lodge #62. Microfilm 366.3 I38ge  
Odd Fellows, Adams Lodge #188. Microfilm 366.3 I38a  
Odd Fellows, Lodge #219. Microfilm 366.3 I38d  
Odd Fellows, Lodge #308. Microfilm 366.3 I38b

### **Atlases and Maps**

Many of these titles are also available in book form. Selected (\*) titles are in digital format at <http://www.kentonlibrary.org/genealogy/maps>.

Atlas of Boone, Kenton, and Campbell Counties 1883. Microfilm 912.769 M678a \*  
Bourbon, Clark, Fayette, Jessamine & Wood Cos, KY Atlas 1877. Microfilm 912.769 M678a  
Bracken and Pendleton Counties, Kentucky Atlas 1884. Microfilm 912.769 M678a \*  
Carroll and Gallatin Counties, Kentucky Atlas 1883. Microfilm 912.769 M678a \*  
Cincinnati and Kentucky Cities 1926. Microfilm 912.769 M678a  
Covington City Atlas 1877. Microfilm 912.769 M678a \*  
Covington Map 1938. Microfilm 912.769 M678a  
Covington and Environs Maps 1936. Microfilm 912.769 M678a  
Covington and Newport Map 1951. Microfilm 912.769 M678a  
Daviess County, Kentucky Atlas 1876. Microfilm 912.769 M678a  
Franklin County, Kentucky Atlas 1882. Microfilm 912.769 M678a  
Henry and Shelby Counties, Kentucky 1882. Microfilm 912.769 M678a  
KY State Gazetteer, 1876-1877; 1879-1880, 1883-1884, 1887-1888, 1896. Microfilm 338.4 K37s  
Logan County, Kentucky Atlas 1877. Microfilm 912.769 M678a  
Louisville, Kentucky Atlas 1876. Microfilm 912.769 M678a  
Louisville, Kentucky Atlas 1884. Microfilm 912.769 M678a  
Nelson and Spencer Counties, Kentucky 1882. Microfilm 912.769 M678a  
Owen County, Kentucky Atlas 1883. Microfilm 912.769 M678a  
Sanborn Fire Insurance Maps, Covington and neighboring cities 1886, 1894, 1909. Microfilm 912.769 M678m  
Sanborn Fire Insurance Maps, State of Kentucky, 1946-1992, Anchorage-Eminence and Louisville -Nicholasville. Microfilm 368.11 S198f and at [www.kentonlibrary.org/genealogy](http://www.kentonlibrary.org/genealogy) .  
Upper Ohio River and Valley from Pittsburgh to Cincinnati 1877. Microfilm 912.769 M678a

## Biography/Personal Papers

Ancestry and Descendancy of Embry King Sr. and Rosa Duncan. Microfilm 929.2 K54s  
 Draper manuscript (Kentucky Portion). Microfilm 976.9 D767mc  
 Dressman, J.H., Scrapbook of 1891-1918. Microfilm 330.9769 J111s  
 Duveneck, Frank: Family photo album, biography & newspaper accounts. Microfilm B D985f  
 Families of Bond & McWhorter with allied Families. Microfilm 929.2 B7113b  
 Genealogy of the Houser, Rhorer, Dillman and Hoover Families. Microfilm 929.2 H8422h  
 Goebel, William F.: Miscellaneous Newspaper Accounts. Microfilm B G593 wi  
 Holmes, Daniel Henry Sr.: Diary 1877-1898. Microfilm B H7495  
 Huber, Edward Justin (NKY Musician) Personal Papers. Microfilm B H877  
 Mackoy Family Papers (in [GeNKY](#))  
 Neal Family Scrapbook. Microfilm 929.2 N344s  
 Autobiography of Dr. J.J. Polk. Microfilm 929.3 G326ah  
 Sommerkamp, Frank, Servicemen letters, 1918-19; Correspondence 1938-47. Mfilm B S 6968  
 Sperti, Georgii Speri, Scrapbook of 1938-1979. Microfilm 330.9769 S751s  
 Stephens/Ryan Families. Microfilm 929.2 S8461s  
 W.T. Sherman Family Papers. Microfilm B S5536wt  
 Yont, Yount, Cordell, Franklin, Howe & Duncan Families. Microfilm 929.2 M678s

## Cemetery Records

Also check the catalog for cemetery records in book form.

Cemetery	City/County	Location
Alexandria Cemetery	Alexandria/Campbell	Microfilm 929.5 C192a
Allen County Cemeteries	Allen	Microfilm COLL Reel 1
Battlegrove Cemetery	Harrison County	Microfilm 929.5 H322b
Buena Vista	Covington/Kenton	KR 976.935 S156j
Carlisle County Cemetery Inscriptions	Carlisle County	Microfilm 929.3 G326ah
Cemeteries of Campbell and Pendleton Counties	Campbell County Pendleton County	KR 976.93 C394cp
Evergreen Cemetery	Southgate/Campbell	Microfilm 929.5 C192e
Gallatin Co. Family Cemeteries	Gallatin County	Microfilm 929.5 G164cf
Grandview Cemetery	Campbell County	Microfilm 929.5 C192c
Highland Cemetery	Ft. Mitchell/Kenton	Microfilm 929.5 K37h
Holy Guardian Angels	Sandfordtown/Kenton	Microfilm 282 S1428j
Independence Cemetery	Independence/Kenton	Microfilm 929.5 I38i KR 976.935 I38cr
Kenton County Cemeteries	Kenton County	KR 976.935 K37s
Knox Co Cemetery Records	Knox County	Microfilm 976.9 M678h2
Linden Grove Cemetery	Covington/Kenton	Microfilm 929.5 K37lm and 976.935 L744gi2
Mary E. Smith African American Cemetery	Elsmere/Kenton	Microfilm 929.5 C192c
Mother of God Cemetery	Covington/Kenton	Microfilm 929.5 K37m and m2
Owsley Co Cemetery	Owsley County	Microfilm 976.9176 O973c
Pendleton Co. Cemeteries	Pendleton County	Microfilm 929.5 P398c, v.1
Plum Creek Church Cem.	Plum Creek/Campbell	Microfilm 929.5 C192c
St. James Cemetery	Brooksville/Bracken	Microfilm 282 S1428j

St. John Cemetery	Ft. Mitchell/Kenton	KR 976.935 S156j
St. Joseph Cemetery	Cincinnati/Hamilton	Microfilm 929.5 O37hsj
St. Joseph Cemetery	Cold Spring/Campbell	Microfilm 282 S143jo
St. Joseph Cemetery	Warsaw/Gallatin	Microfilm 282 S143je
St. Mary Cemetery	Fort Mitchell/Kenton	Digital Images 1891-1996
St. Patrick Cemetery	Maysville/Mason	Microfilm 282 C363c
St. Patrick Cemetery	Washington/Mason	Microfilm 282 C363c
St. Stephen Cemetery	Ft. Thomas/Campbell	KR 976.934 S153a
Warren County Cemeteries	Warren County	Microfilm 929.3 B967g
Wesley Chapel Cemetery	Campbell County	Microfilm 929.5 C192c

### **Census Records (microfilm)**

United States Census for the Commonwealth of Kentucky: 1810-1880 and 1900-1930

United States Census for the Commonwealth of Kentucky: 1890 Civil War veterans and widows  
Agricultural and Manufacturing Census Records, 1850, 1860, 1870 Microfilm 929.31 U58cam

Kenton County School Census, 1912-1977. Microfilm 320.83K37be

### **geNKY Church Records Index**

*The geNKY database contains a searchable index for the following church records.*

- Cathedral Parish, Covington Baptisms 1850-1924 (Also known as Saint Mary)
- Holy Guardian Angels Church, Sandfordtown Baptisms 1867-1926
- Mother of God Church, Covington Baptisms 1842-1915
- Saint Aloysius, Covington Baptisms 1865-1927
- Saint Ann Church, West Covington Baptisms 1889-1904
- Saint Augustine Church, Covington Baptisms 1870-1895
- Saint Benedict Church, Covington Baptisms 1885-1910
- Saint Boniface Church, Ludlow Baptisms 1872-1924, Deaths 1872-1925
- Saint Charles Borromeo Church, Flemingsburg Baptisms 1900-1925
- Saint Henry Church, Elsmere/Erlanger Baptisms 1904-1924
- Saint James Church, Ludlow Baptisms 1889-1924, Deaths 1889-1925
- Saint John Church, Covington Baptisms 1919-1934
- Saint Joseph Church, Covington Baptisms 1856-1937
- Saint Paul, Florence Baptisms 1891-1916
- Saint Patrick Church, Covington Baptisms, Marriages, Deaths 1872-1967
- Saint Philip, Melbourne Baptisms 1910-1926
- Saint Stephen Episcopal, Covington Baptisms, Deaths 1907-1947
- Saint Thomas, Fort Thomas Baptisms 1895-1925

## Church Records – Catholic

<i>Parish</i>	<i>City/County</i>	<i>Dates</i>	<i>Film Location</i>
Cathedral - St. Mary (I)	Covington/Kenton	1850-1924	F282 S146m
Corpus Christi (G)	Newport/Campbell	1845-1924	F282 C822c
Holy Cross (G)	Covington/Kenton	1891-1924	F282 H761c
Holy Guardian Angels (G)	Sandfordtown/Kenton	1867-1994	F282 S1428j
Immaculate Conception	Stepstone/Campbell	1858-1912	F282 C363ca
Immaculate Conception (I)	Newport/Campbell	1856-1961	F282 C822c
Mother of God (G)	Covington/Kenton	1842-1924	F282 S1427ja and jb
St. Aloysius (G)	Covington/Kenton	1865-1986	F282 S133a
St. Ann (I)	Covington/Kenton	1862-1930	F282 S134a
St. Anthony (I)	Bellevue/Campbell	1889-1924	F282 S138 fb
St. Augustine	Augusta/Bracken	1860-1925	F282 C363ca
St. Augustine (G)	Covington/Kenton	1870-1924	F282 S146m
St. Benedict (G)	Covington/Kenton	1885-1987	F282 S135b
St. Bernard (G)	Dayton/Campbell	1854-1924	F282 S138f and fb
St. Boniface (G)	Ludlow/Kenton	1872-1924	F282 S146m & S1354b
St. Charles Borromeo	Flemingsburg/Fleming	1900-1925	F282 C363cc
St. Elizabeth Hospital	Covington/Kenton	1861-1947	F362.11 S137e
St. Edward	Cynthiana/Harrison	1872-1925	F282 C363cb
St. Francis (G)	Dayton/Campbell	1853-1904	F282 S138f and fb
St. Francis de Sales	Newport/Campbell	1912-1997	F282 S138f
St. Francis Xavier	Falmouth/Pendleton	1868-1925	F282 C363 ca
St. Henry	Elsmere/Kenton	1904-1924	F282 H761c
St. James (I)	Ludlow/Kenton	1887-1924	F282 S1427ja
St. James	Brooksville/Bracken	1860-1947	F282 S1428j
St. John the Baptist (G)	Wilder/Campbell	1859-1924	F282 S143jo
St. John the Evangelist	Carrollton/Carroll	1855-1925	F282 S143je
St. John the Evangelist (G)	Covington/Kenton	1855-1981	F282 S1437j
St. Joseph	Cold Spring/Campbell	1874-1924	F282 S143jo
St. Joseph (G)	Covington/Kenton	1856-1970	F282 S143jok
St. Joseph (G)	C. Springs/Campbell	1843-1924	F282 S143jo
St. Joseph	Warsaw/Gallatin	1862-1925	F282 S143je
St. Mary	Alexandria/Campbell	1860-1927	F282 S143jo
St. Mary	Morningview/Kenton	1860-1925	F282 S143je
St. Patrick (I)	Covington/Kenton	1872-1967	F282 S149p & H761c
St. Patrick	Maysville/Mason	1848-1925	F282 C363cb and cc
St. Paul	Florence/Boone	1862-1924	F282 S143jo
St. Philip	Melbourne/Campbell	1910-1926	F282 S1428j
St. Rose of Lima	Mayslick/Mason	1885-1925	F282 C363cc
St. Stephen (G)	Newport/Campbell	1855-1924	F282 S1427jb & S1534s
St. Thomas	Ft. Thomas/Campbell	1895-1925	F282 C363ca
St. Vincent de Paul	Newport/Campbell	1916-1992	F282 S155v
Sts. Peter and Paul (G)	California/Campbell	1848-1925	F282 C363ca

(G) = German-Speaking Parish. (I) = English-Speaking Parish - Irish.

## Church Records - Protestant

<i>Church</i>	<i>City/County</i>	<i>Dates</i>	<i>Film Location</i>
Augusta Baptist	Augusta/Bracken	1907-1962	F286 A923b
Beaver Baptist	Cynthiana/Harrison	1809-1955	F286 B386b
Bellevue Baptist	Bellevue/Boone	1803-1914	F286 B442b
Big Bone Baptist	Big Bone/Boone	1823-1948	F286 B529bc
Boyer Presbyterian	Harrison County	1919-1959	F285 H323c
Campbell County Baptist Assn.	Campbell County	1836-1876	F286 C129ba
Central (Tabernacle) Baptist	Maysville/Mason	1931-1985	F286 C397b
Christ United Church of Christ	Ft. Thomas/Campbell	1908-1986	F285.834 C554u
Cynthiana Presbyterian	Harrison County	1929-1996	F285 H323c
First German Evangelical	Rising Sun/Indiana	1869-1919	F286 R332b
First German Presbyterian	Cincinnati/Hamilton	1855-1915	F286 R332b
First Presbyterian	Crescent Springs/Kenton	1898-1933	F285 C919s
First Presbyterian	Ludlow/Kenton	1867-1994	F285 F527p
First Twelve Mile Baptist	Campbell County	1819-1863	F286 F527t
Florence Baptist	Florence/Boone	1893-1962	F286 F632b
Four Mile Baptist	Campbell County	1819-1874	F286 F773mb
Ft. Mitchell Baptist	Ft. Mitchell/Kenton	1924-1967	F286 F736m
German Evangelical Reformed	Covington/Kenton	1862-1948	F286 R332b
Glencoe Baptist	Glencoe/Gallatin	1878-1956	F286 G558b
Grace Reformed	Covington/Kenton	1862-1995	F286 R332b
Grace United Church of Christ	Covington, Kenton	1862-1949	F285.834 G729u
Immanuel Church of Christ	Bromley/Kenton	1894-1956	F285.834 I33u
Immanuel M.E.	Covington/Kenton	1847-1937	F286 R332b
Kenton County Protestant Assn.	Covington/Kenton	1945-1968	F284 K37cp
Lair Chapel Presbyterian	Harrison County	1908-1926	F285 H323c
Madison Avenue Baptist	Covington/Kenton	1857-1937	F286 332b
Mountain Island Baptist	Owen	1801-1836	F286 R332b
Pleasant Ridge Baptist	Campbell County	1854-1980	F286 M928i
Pleasant View Baptist	Owen	1839-1888	F286 P724r
Salem Reformed	Cincinnati/Hamilton	1857-1932	F286 P724v
Sand Run Baptist	Hebron/Boone	1819-1972	F286 R332b
Second Reformed	Dayton/Montgomery OH	1852-1922	F286 R332b
Sharon Baptist	Gallatin	1825-1856	F286 S531b
St. John Church of Christ	Bellevue/Campbell	1898-1987	F284.1312 S143je
St. John Congregation	Covington/Kenton	1938-1977	F285.8 S143j
St. John Evangelical	Bellevue/Campbell	1887-1987	F284.1312 S143je
St. John United Church of Christ	Newport/Campbell	1848-1986	F285.834 S143ju
St. Mark Evangelical Lutheran	Campbell County	1894-1966	F284.1312 S146m
St. Paul	Alexandria/Campbell	1923-1883	F284 S1493p and pa
St. Paul Evangelical	Covington/Kenton	1847-1937	F286 R332b
St. Paul Evangelical	Cincinnati/Hamilton	1845-1920	F286 R332b
St. Paul United Church of Christ	Newport/Campbell	1862-1950	F285.834 S149pu
St. Peter Evangelical	Cincinnati/Hamilton	1832-1932	F286 R332b
St. Stephen Episcopal	Covington/Kenton	1907-1977	F282.73 S149s
Western Baptist Institute	Covington/Kenton	History	F286 J29h
Willow Baptist	Brooksville/Bracken	1818-1964	F286 W739b
Zion German Evangelical	Cincinnati/Hamilton	1843-1913	F286 R332b

## **City Directories**

Covington, Newport and Vicinity, 1834; 1839-1840; 1856-present. Various editions in microfilm and print formats. Microfilm 910.25 C873

Cincinnati, 1902-1935; 1951-present. In microfilm and print formats. Microfilm 910.25 C574c  
Various other city directories are available for Kentucky cities including: Ashland, Bowling Green, Corbin, Danville, Frankfort, Hopkinsville, Lexington, Louisville, Maysville and Paducah. Check the catalog for availability. Microfilm copies are found at 910.25.

## **City Records**

Bellevue City Records, 1879-1885; 1889-1892. Microfilm 320.B442

Bromley Volunteer Fire Dept. Minutes and Rosters 1900-1913. Microfilm 320.85 B868f

Central Covington Clerk: Board of Trustee Minutes 1880-1906. Microfilm 320.85 C397m

Covington Clerk: Board of Equalization, 1899-1940. Microfilm 320.85 C873be

Covington Clerk: City Commission Minutes 1914-1993. Microfilm 320.85 CC873cm

Covington Clerk: Council Minutes 1837-1914. Microfilm 320.85 C873cm

Covington Clerk: Minutes 1888-1952. Microfilm 320.85 C873v

Covington Clerk: Ordinances 1887-1928. Microfilm 320.85 C873o

Covington Police Department: Records of Arrest 1960-1977. Microfilm 320.85C873p

Crescent Springs: Clerk Records 1957-1996. Microfilm 320.85 C919

Crestview Hills: Clerk Records. Microfilm 320.85 C922

Crestview Hills: Records from the Office of the Clerk. Microfilm 320.85 C922

Independence: Clerk Records. Microfilm 320.85 I38

Latonia City Clerk Records 1907-1917. Microfilm 320.85 L358

Lexington: Certificates of Town Lots 1786-1814. Microfilm 976.9 M678r

Lexington: Minute Book of Trustees 1781-1791. Microfilm 976.9 M678r

Ludlow: Board of Health Minutes. Microfilm 320.85 L945bh

Ludlow: City Council Minutes. Microfilm 320.85 L945m

Ludlow: City Council Ordinances. Microfilm 320.85 L945o

Ludlow: Incorporation, City Charter and Correspondence. Microfilm 320.85 L945c

Ludlow: Mayor's Court 1881-1891. Microfilm 320.85 L945mc

Ludlow: Vol. Fire Department Minutes and Rosters 1884-1946. Microfilm 320.85 L945vf

Ludlow Public School Student Records and Board Minutes 1872-1912. Microfilm 320.85 L945is

Sunny Acres: Clerk records. Microfilm 320.85 S958

South Hills: Documents and Plat Maps. Microfilm 320.85 F736w

Taylor Mill: Clerk records 1956-1997. Microfilm 320.85 T247

Villa Hills: Minutes and Ordinances. Microfilm 320.85 V712

West Covington City Clerk Records 1907-1917. Microfilm 320.85 L358

Winston Park: Clerk Records 1930-1972. Microfilm 320.85 W783

## **County Records**

Campbell County: Court of Quarter Sessions, Case Files 1795-1934. Microfilm 347.013 C193c

Kenton County: Minute Book 1869-1875. Microfilm 976.935 K367m2

Kenton County: Cancelled Voter Registration Forms 1936-1972. Microfilm 320.83 K37

Kenton County: Enumeration Return of School Aged Children 1912-1914; 1921-1922. Microfilm 320.83 K37be

Kenton County: School Census Cards 1915-1977. Microfilm 320.83 K37be

Kenton County: Voter Registration Forms 1936-1972. Microfilm 320.83 K37v

Kenton County: Circuit Court Index to Civil Cases 1940-1977. Microfilm 347.013 K37cc

Kenton County: General Cross Index to Real Estate 1901-1991. Microfilm 347.013 K37xr  
Kenton County: Court Official Records. Microfilm 347.013 K37c Indp  
Kenton County: Court Order Books 1858-1939. Microfilm 347.013K37o  
Kenton County: General Index to Record Instruments 1939-1982. Microfilm 347.013 K37x  
Kenton County: Inventory, Appraisalment, and Sale Bill Books 1858-1939. Microfilm  
347.013K37ia  
Kenton County: Constable Bonds. 1840-1877. Microfilm 976.935 K367m2  
Kenton County: Sheriff Bonds 1841-1852. Microfilm 976.935 K367m2  
Kenton County: Sheriff and County Bonds 1853-1859. Microfilm 976.935 K367m2  
Owen County: Court Order Books 1819-1977. Microfilm 347.013 O97c  
Virginia Counties: Municipal Court Records. Microfilm 347.013 V817c

## **Family Files**

Family files include various materials such as:

- Correspondence between genealogists and the Kenton County Public Library (requests for information and responses)
- Ancestral charts and family group sheets

The geNKY database at <http://genealogy.kentonlibrary.org/genky/gendb.php> contains an index to the family files.

## **Federal Records**

Records of the Education Division of the Bureau of Refugees, Freedmen, and Abandoned Lands, 1865-1871. Microfilm 973.714 R311e  
United States Court House & Post Office Building Records, Covington: Employee Time and Record Book 1912-1920 and Letter Book 1905-1911. Microfilm 347.732 U58c  
Letters Received by the Department of Justice from the State of Kentucky, 1871-1884. Microfilm 353.4 J96l

## **Funeral Home Records**

Donnelly Funeral Home, Covington 1873-1937. Microfilm 363.75 K37d  
Middendorf Funeral Home, Covington 1912-1923. Microfilm 363.75 K37m  
Tharp and Stith Funeral Home, Alexandria and Dayton 1929-1945. Microfilm 363.7 C193t

## **Guardian Bonds**

Campbell County Guardian Bonds 1863-1945. Microfilm 346.018 C193g  
Kenton County Guardian Bonds 1852-1866. Microfilm 976.935 K367m2

## **Local History Files**

The Kenton County Public Library maintains a collection of local history vertical files detailing the history of Northern Kentucky. The [geNKY database](#) contains an index to the local history files. Selected local history files materials have been digitized and are viewable from the geNKY database.

## **Military Records**

Kenton County, Kentucky in the World War 1917-1919 (Information on Kenton Co. Soldiers.) Microfilm 976.935 H673k  
Kentucky War Records 1812, 1861-1865. Microfilm 976.9K37w  
Name Index to Report of the Adjutant General of the State of Kentucky (Union) Vol. 1&2 1861-1866. Microfilm 355.009 N174i

Pensions of Soldiers of the Revolutionary War, War of 1812 and Indian Wars from Kentucky.  
Microfilm 929.3 B967a

Report of the Adjutant General of Kentucky, KY Volunteers in the War with Spain 1898-1899.  
Microfilm 976.935 K367m2

Report of the Adjutant General of Kentucky, Kentucky Mexican War Veterans.  
Microfilm 976.935 K367m2

Returns from U.S. Military Posts: Covington & Newport, Sept. 1862-Oct. 1865.  
Microfilm 355.009 R439

Returns from U.S. Military Posts: Newport Barracks, Apr. 1839-Dec.1858.  
Microfilm 355.009 R439

Returns from United States Military Posts: Newport Barracks, Jan. 1858-Dec. 1871.  
Microfilm 355.009 R439

Returns from United States Military Posts: Newport Barracks, Jan. 1871-Dec. 1882.  
Microfilm 355.009 R439

Returns from United States Military Posts: Newport Barracks, Jan. 1883-Nov. 1894.  
Microfilm 355.009 R439

Returns from United States Military Posts: Fort Thomas, Aug. 1890-Dec.1916.  
General Hospital Records, May 1898-February 1899. Microfilm 355.009 R439

Returns from United States Military Posts: Camp Thomas, Ohio, Dec. 1861-Nov. 1865.  
Microfilm 355.009 R439

Service Records - Confederate Soldiers from Kentucky. Microfilm 355.009 S491r

Veterans Discharge Books Vol. 1-3, Owen County, Kentucky, 1924-1992.  
Microfilm 355.009 V586o

Service Records - Confederate Soldiers from Tennessee. Microfilm 355.009 S491t

Service Records - Confederate Soldiers from Texas. Microfilm 355.009 S491tx

World War I Selective Service Draft Registration Cards – Kentucky. Microfilm 355.22363 W927d

### **Mortality Schedules**

Kentucky Mortality Schedules 1850, 1860, 1870, 1880 (in alphabetical order by county.)  
Microfilm 929.31 K37m. Also available on Ancestry.

### **Naturalization Records**

Kenton County Naturalization Books, 1891-1906. Microfilm 323.623 K37n



## Newspapers

Many other smaller publications are available. Check the KCPL catalog for details or search the [Northern Kentucky Newspaper Index](#).

Code	Newspaper Name	Dates Covered
AT	Augusta Telegraph	Oct 5, 12, Nov 16, Dec 7, 14, 1833
BCB	Boone County Banner	Jan 1896-July 1898
CBC	Cincinnati Business Courier	1984-Apr 1999
CE	Cincinnati Enquirer Ky.Ed.	1862-1869; 1899-Current
KTS	Cincinnati Times-Star	May 5, 1902-July 19, 1958
CT	Commercial Tribune	June 1, 1901-Oct 6, 1914
COM	Commonwealth	July 6, 1876-Feb 5, 1880
CC	Covington Courier	Sept 20, 1902-Sept 11, 1903; Feb 6, Sept 18, Oct 2, 9, 1903; Aug 12-Sept 30, 1904; Mar 17 and May 12, 1905
CDN	Covington Daily News	Aug 21, 1875
CJ	Covington Journal	Jan 5, 1849-Aug 30, 1862; Feb 8, 1868-Sept 30, 1876
CK	Covington Kentuckian	July 18, Aug 15, 1855
CWG	Covington Weekly Globe	Jan 27, 1859
DC	Daily Commonwealth	Sept 30, 1877-Dec 18, 1877; 1879-1884; March 19, 1892
DN	Dixie News	Jan 1984-Current
EN	Erlanger News	Oct 20, 1928
EXTR	Extra	Oct 23, 1897
FAO	Falmouth Outlook	1907-1959
FML	Fort Mitchell Living	March 1984-May 2002
FTL	Fort Thomas Living	1980-1986
KCR	Kenton County Recorder	May 7, 1980-2010
KH	Kentucky Herald	Sept 2, 1927
KP	Kentucky Post	Dec 31, 1890; Jan 2, 1892-Dec. 31, 2007
KSJ	Kentucky State Journal	Jan 4, 1881-1894
LVR	Licking Valley Register	July 21, 1841-Dec 27, 1845 and Jan. 3, 1846-Nov. 5, 1847
NL	Newport Local	Sept 5, 1876-1878
NE	News Enterprise	Nov 19, 1956-Jan 9, 1991
PCF	Pikes Campaign Flag	July 17, 1852
SA	Saturday Advertiser	Jan 25, 1873-June 7, 1873
T	Ticket	April 8, 1875-Jan 5, 1878

## Passenger Lists

Ship Passenger Lists, New York and New Jersey 1600-1825. KR 929.3 P287ana  
 Germans to America: Lists of Passenger Arriving at U.S. Ports 1850-1895. KR 929.343 G373a  
 Irish Passenger Lists, 1847-1871: Lists of Passengers. KR 929.3415 I68p  
 German Immigrants: Lists of Passengers bound from Bremen to New York, 1847-1854; 1855-1862; 1863-1867; 1868-1871 with Places of Origin. KR 929.343 Z72g  
 Passenger Arrivals at the Port of New York, 1820-1829; 1830-1832. KR 929.3 B477p  
 Passenger Arrivals at the Port of Baltimore, 1820-1834. KR 929.3 T314p

Passengers to America: A Consolidated Ship Passenger Lists from the New England Historical and Genealogical Register. KR 929.3 P287a

Italians to America: Lists of Passengers Arriving at U.S. Ports, 1880-1899. KR 929.3 I88a

Immigrants to the Middle Colonies: A consolidation of Ship Passenger Lists. KR 929.3 I33m

The Famine Immigrants: Lists of Irish Immigrants Arriving at the Port of New York, 1846-1851. KR 929.3 F198I

Passenger and Immigration Lists Index. KR 929.3 P287I

Ship Passenger Lists: Pennsylvania and Delaware, 1641-1825. KR 929.3 P287ap

New World Immigrants. KR 929.3 N532w

Many other passenger lists can also be found on Ancestry Library Edition and FamilySearch.

## Photograph Collection

The Kenton County Public Library began collecting historical photographs of Northern Kentucky in 1978. Since then, the collection has grown to over 110,000 images, including many photographs from the defunct *Kentucky Post* newspaper. Digital copies of the library's photographs can be found on the *Faces and Places: The Northern Kentucky Photograph Archive* at <http://www.kentonlibrary.org/genphotos/>.

## Property Records

Campbell County Deed Indexes. Microfilm 346.0438 C193d

Kenton County (Independence) Index to Real Estate 1835-1912. Microfilm 346.0438 K37i

Kenton County (Independence) Index to Real Estate 1894-1947. Microfilm 346.0438 K37i

Kenton County: General Index to Deeds 1892-1900. Microfilm 346.0438 K37i

Kenton County Original Plats and Index. Microfilm 346.0438 K37

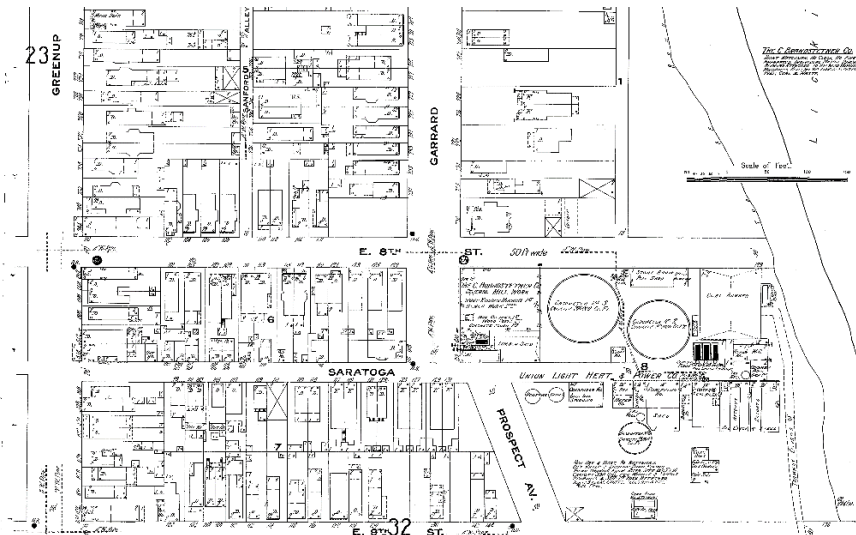
Lincoln County Deeds 1782-1800. Microfilm 976.9 M678r

Ludlow Plat Books 1895-1927. Microfilm 346.0438 K37L

Nicholas County Deed Abstracts. Microfilm 929.3 B967g

Owen County Deeds 1819-1988. Microfilm 346.0438 O39d

Owen County Mortgage Books 1927-1990. Microfilm 346.0438 O39m



## Special Collections

The Covington Library serves as the official repository for many local community organizations and institutions. Access to these materials can be found on the library website at <http://www.kentonlibrary.org/genealogy/special-collections> or by inquiring with the Local History & Genealogy Department within the library.

## Tax Records

Microfilm 929.3 Date ranges do not always indicate a complete set of records.

County	Dates	County	Dates
Adair County	1802-1824	Harrison County	1794-1808
Boone County	1799-1878	Jefferson County	1789-1799
Bourbon County	1787-1806	Kenton County	1848-1892
Bracken County	1797-1875	Kenton Co. Delinquent	1922-1926
Campbell County	1795-1875	Letcher County	1843-1875
Casey County	1842-1861	Madison County	1787-1804
Fayette County	1787-1804	Mason County	1790-1809
Floyd County	1793-1857	Mercer County	1789-1810
Gallatin County	1799-1857	Owen County	1819-1853
Garrard County	1797-1819	Pendleton County	1799-1842
Grant County	1820-1856	Scott County	1794-1821
Green County	1795-1834	Woodford County	1790-1815

## *Guide to Birth and Death Records in Kentucky*

- The Commonwealth of Kentucky did not keep any records of births or deaths prior to 1852.

### 1852-1910

- Generally, birth and death records exist for each county during the following time periods: 1852-1861 and 1874-1878. Many counties also kept records in the 1890s and early 1900s. These series of records are often referred to as the Sutton Records and are arranged by county. The Sutton Records can be found at the following call number: Microfilm 353.59 K372v
- Many of the records can also be found in book form. Consult the [KCPL catalog](#) for more information.
- Sutton Records consist of chronological lists of births, deaths and marriages. Detailed information including names of parents, location, dates and cause of death are often provided.

The four largest cities in the Commonwealth independently maintained records of births and deaths within their boundaries:

	<b>Covington</b>	<b>Lexington</b>	<b>Louisville</b>	<b>Newport</b>
<b>Birth Records</b>	1896-1911	1900-1910	1898-1910	1907-1911
<b>Death Records</b>	1881-1915	1894-1910	1866-1910	1884-1928
<b>Call Number</b>	Microfilm 353.59 K37b Microfilm 353.59 K37d	Microfilm 353.59 F284b Microfilm 353.59 F284d	Microfilm 353.59 J45b Microfilm 353.59 J45d	Microfilm 353.59 C193b Microfilm 353.59 C193d

- The city of Bellevue in Campbell County also maintained death and burial records, 1896-1900 and 1907-1910.

### 1911 and After

- Records are available statewide.
  - Birth records become available 100 years after the date in which they were kept.
  - Death records become available 50 years after the date in which they were kept.
- The call number for Kentucky death records is Microfilm 353.59 V868cd.

### Vital Statistics – Birth, Marriage and Death

*Kentucky Birth Index (1911-1999), Birth Records (1852-1910), Death Index (1911-2000), Death Records (1852-1965) and County Marriages (1783-1965) are available on Ancestry.*

Annie Burns Vital Statistics Collection: Miscellaneous Birth, Marriage and Death Records for Various Kentucky Counties. Microfilm 929.3 M359r and 929.3 M359ra  
Bellevue Death Records 1896-1899, Burial Records 1896-1900, 1907-1910.  
Microfilm 353.59 C193db

Campbell County Births (Newport) (1907-1911). Microfilm 353.59 C193b  
Campbell County Deaths (Newport) (1884-1928). Microfilm 353.59 C193d  
Campbell County Marriages (1795-1851) Includes Index. Microfilm 353.59 C193m  
Clark County Marriages (various Bonds and Indexes) (1793-1911). Microfilm F353.59 M359cl.  
Fayette County (Lexington) Births (1907-1910). Microfilm 353.59 F284b  
Fayette County (Lexington) Deaths (1886-1910). Microfilm 353.59 F284d  
Jefferson County Births (Louisville) (1898-1910). Includes Index. Microfilm 353.59 J45b  
Jefferson County Deaths (Louisville) (1866-1910). Includes Index. Microfilm 353.59 J45d  
Kenton County Births (Covington) (1896-1911). Microfilm 353.59 K37b  
Kenton County Deaths (Abstracts) (1852-1859 and 1876-1877). KR 976.935 W642a.  
Kenton County Deaths (Covington) (1881-1915). Microfilm 353.59 K37d  
Kenton County Marriage Records: Covington (1874-1912, to Bk. 44). Microfilm 353.59 K37m  
Kenton County Marriage Records: Independence (1840-1966). Microfilm 353.59 K37mi  
Kentucky Birth Records Index (Entire State) (1911-1995). Microfiche.  
Kentucky Birth, Marriage and Death Records (1852-1910) (Incomplete) Microfilm 353.59 K372v  
Kentucky Directory of Births and Deaths (1911-1954). Microfilm 353.59 K37v  
Kentucky Death Records Index (Entire State) (1911-1995). Microfiche.  
Kentucky Death Certificates (Entire State) (1911- ongoing) Microfilm 353.59 V868cd  
Kentucky Divorce Records Index (1974-1996). Microfiche.

Kentucky Marriage Records Index (1973-1995). Microfiche.  
Mason County Marriages (Bonds and Returns) (1788-1949). Microfilm 353.59 M359ma  
Owen County Marriage Records (1819-1922). Microfilm 353.59 O97

Kentucky Vital Statistics: Sutton Records - Birth, Marriage and Death Records 1852-1907.  
Microfilm 353.59 K372v (Dates are not inclusive).

**Reel 1:** Adair 1852-1907; Allen 1852-1904; Anderson 1852-1878; **Reel 2:** Ballard 1852-1894; Barren 1852-1878; Bath 1852-1901; **Reel 3:** Boone 1852-1879; Bourbon 1852-1878; Boyd 1859-1907; Boyle 1852-1907; **Reel 4:** Bracken 1852-1905; Breathitt 1852-1878; Breckinridge 1852-1904; Bullitt 1852-1907; Butler 1853-1907; **Reel 5:** Caldwell 1852-1878; Calloway 1852-1907; Campbell 1852-1907; Carlisle 1901-1907; Carroll 1852-1860; Carter 1852-1907; **Reel 6:** Casey 1852-1907; Christian 1852-1907; Clark 1852-1904; **Reel 7:** Clay 1852-1907; Clinton 1852-1904; Crittenden 1852-1907; Cumberland 1852-1907; **Reel 8:** Daviess 1853-1874; Edmondson 1852-1893; Estill 1852-1878; **Reel 9:** Fayette 1852-1905; Fleming 1852-1878; Floyd 1852-1904; Franklin 1852-1909; Fulton 1852-1904; **Reel 10:** Gallatin 1852-1878; Garrard 1852-1878; Grant 1852-1907; Graves 1852-1907; **Reel 11:** Grayson 1852-1907; Green 1852-1878; Greenup 1852-1904; **Reel 12:** Hancock 1852-1907; Hardin 1852-1874; Harlan 1852-1904; Harrison 1852-1878; Hart 1852-1907; **Reel 13:** Henderson 1852-1907; Henry 1852-1877; Hickman 1852-1904; Hopkins 1852-1907; **Reel 14:** Jackson 1858-1904; Jefferson 1852-1892; **Reel 15:** Jessamine 1852-1907; Johnson 1852-1904; **Reel 16:** Kenton 1852-1907; Knox 1852-1907; Larue 1907; **Reel 17:** Laurel 1852-1904; Lawrence 1852-1907; Lee 1852-1901; Leslie 1852-1879; Letcher 1852-1907; Lewis 1852-1878; **Reel 18:** Lincoln 1852-1878; Livingston 1852-1907; Logan 1852-1878; Lyon 1852-1908; **Reel 19:** Madison 1852-1907; Magoffin 1852-1877; Marion 1852-1904; Marshall 1852-1907; Martin 1852-1878; Mason 1852-1907; **Reel 20:** McCracken 1852-1908; McLean 1852-1907; Meade 1852-1907; Menifee 1852-1878; Mercer 1852-1860; Metcalfe 1852-1907; Monroe 1852-1907; **Reel 21:** Montgomery 1852-1894; Morgan 1852-1904; Muhlenburg 1852-1907; **Reel 22:** Nelson 1852-1907; Nicholas 1852-1878; **Reel 23:** Ohio 1852-1907; Oldham 1852-1879; Owen 1852-1875; Owsley 1852-1904; **Reel 24:** Pendleton 1852-1879; Perry 1852-1859; Pike 1852-1907; Powell 1852-1878; Pulaski 1852-1878; **Reel 25:** Robertson 1874-1878; Rockcastle 1852-1878; Rowan 1856-1906; Russell 1852-1904; **Reel 26:** Scott 1852-1879; Shelby 1852-1878; Simpson 1852-1907; Spencer 1852-1907; **Reel 27:** Taylor 1852-1904; Todd 1852-1904; Trigg 1852-1907; Trimble 1852-1894; **Reel 28:** Union 1852-1878; Warren 1852-1907; Washington 1852-1878; Wayne 1852-1878; Webster 1852-1877; **Reel 29:** Whitley 1852-1904; Wolfe 1861-1904; Woodford 1852-1878.

## Wills

Adair County Wills 1801-1851. Microfilm 929.3 M359r  
Allen County Wills and Settlements 1815-1902. Microfilm 929.3 M359r  
Bath County Wills. Microfilm 929.3 M359r  
Bracken County Wills 1769-1851. Microfilm 929.3 G326ah  
Campbell County Will Index 1820-1926. Microfilm 929.3 W741c  
Clark County Will Abstracts 1792-1851. Microfilm 929.3 G326ah  
Fleming County Wills. Microfilm 929.3 G326ah  
Grant County- Index to Will Book A. 1820-1833. Microfilm 976.9 M678r  
Grant County Wills 1820-1833. Microfilm 976.9 M678r  
Henderson County Wills 1819-1850 with Index and 1799-1851. Microfilm 976.9 M678r  
Hopkins County Wills 1801-1881. Microfilm 929.3 M359ra

Kenton County Will Books 1858-1915. Microfilm 929.3 W741k  
Kenton County Wills (Independence) 1840-1906. Microfilm 929.3 W741ki  
Kenton County Wills (Covington Courthouse) 1915-1970. Microfilm 929.3 W741kc  
Laurel County Wills 1824-1843. Microfilm 929.3 M359ra  
Logan County Wills 1792-1851. Microfilm 976.9253 W741a  
Mason County Wills 1813-1823. Microfilm 976.9253 W741a  
Nelson County Wills 1784-1851. Microfilm 929.3 B967g  
Nicholas County Record of Wills. Microfilm 929.3 B967g  
Owen County Will Books 1820-1987. Microfilm 929.3 W741o  
Owen County Settlement Books 1869-1977. Microfilm 929.3 W741os  
Warren County Will Abstracts. Microfilm 929.3 B967g  
Washington County Wills 1792-1858. Microfilm 929.3 B967gt  
Woodford County Wills 1788-1851. Microfilm 976.9465 W747c



## Kenton County Public Library Call Numbers by County

Adair	976.9675	Grant	976.9395	Mason	976.9323
Allen	976.9732	Graves	976.993	Meade	976.9852
Anderson	976.9463	Grayson	976.9842	Menifee	976.9583
Ballard	976.996	Green	976.9695	Mercer	976.9485
Barren	976.972	Greenup	976.9293	Metcalfe	976.9693
Bath	976.9555	Hancock	976.9862	Monroe	976.9685
Bell	976.9123	Hardin	976.9845	Montgomery	976.9553
Boone	976.9363	Harlan	976.9154	Morgan	976.9253
Bourbon	976.9423	Harrison	976.9413	Muhlenberg	976.9832
Boyd	976.927	Hart	976.9715	Nelson	976.9495
Boyle	976.9523	Henderson	976.987	Nicholas	976.9417
Bracken	976.9325	Henry	976.9385	Ohio	976.9835
Breathitt	976.919	Hickman	976.998	Oldham	976.9383
Breckinridge	976.9854	Hopkins	976.9823	Owen	976.9393
Bullitt	976.9453	Jackson	976.9183	Owsley	976.9176
Butler	976.9755	Jefferson	976.944	Pendleton	976.933
Caldwell	976.9815	Jessamine	976.9483	Perry	976.9173
Calloway	976.992	Johnson	976.9245	Pike	976.923
Campbell	976.934	<b>Kenton</b>	<b>976.935</b>	Powell	976.9585
Carlisle	976.997	Knott	976.9165	Pulaski	976.963
Carroll	976.9373	Knox	976.9125	Robertson	976.9415
Carter	976.928	Larue	976.9713	Rockcastle	976.9623
Casey	976.966	Laurel	976.9143	Rowan	976.957
Christian	976.978	Lawrence	976.926	Russell	976.9655
Clark	976.954	Lee	976.9185	Scott	976.9425
Clay	976.9145	Leslie	976.9152	Shelby	976.9435
Clinton	976.9653	Letcher	976.9163	Simpson	976.9735
Crittenden	976.9893	Lewis	976.9295	Spencer	976.9455
Cumberland	976.9683	Lincoln	976.9625	Taylor	976.9673
Daviess	976.9864	Livingston	976.9895	Todd	976.977
Edmonson	976.9752	Logan	976.976	Trigg	976.979
Elliott	976.9255	Lyon	976.9813	Trimble	976.9375
Estill	976.959	McCracken	976.995	Union	976.9885
Fayette	976.947	McCreary	976.9135	Warren	976.974
Fleming	976.956	McLean	976.9826	Washington	976.9493
Floyd	976.922	Madison	976.953	Wayne	976.964
Franklin	976.9432	Magoffin	976.9215	Webster	976.9883
Fulton	976.999	Marion	976.951	Whitley	976.9132
Gallatin	976.9365	Marshall	976.991	Wolfe	976.9213
Garrard	976.9525	Martin	976.9243	Woodford	976.9465

K = denotes Kentucky Collection (Circulating)

KR = denotes Kentucky Reference Collection (Non-circulating)



*Preserve. Enrich. Inspire.*

**Kenton County Public Library  
Local History & Genealogy Department  
502 Scott Blvd.  
Covington, KY 41011  
Phone: (859) 962-4070  
Email: [History @kentonlibrary.org](mailto:History@kentonlibrary.org)  
Web Site: [www.kentonlibrary.org/genealogy](http://www.kentonlibrary.org/genealogy)**



XVI: February 2021